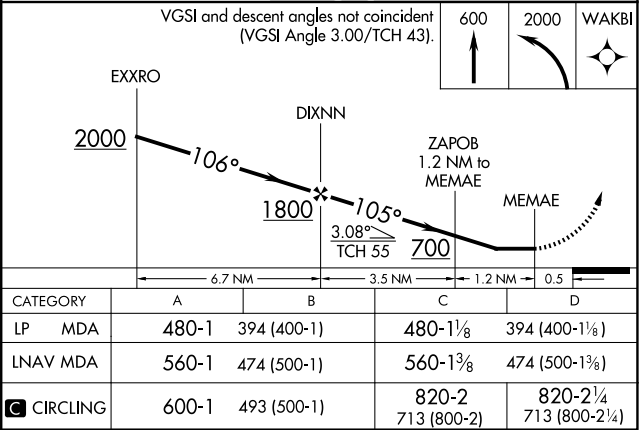
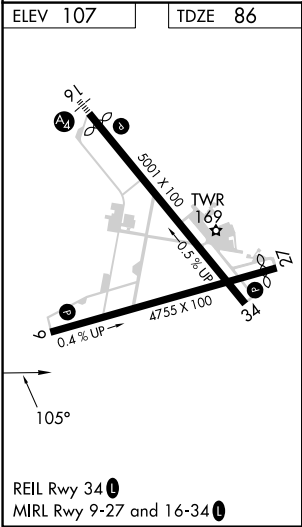
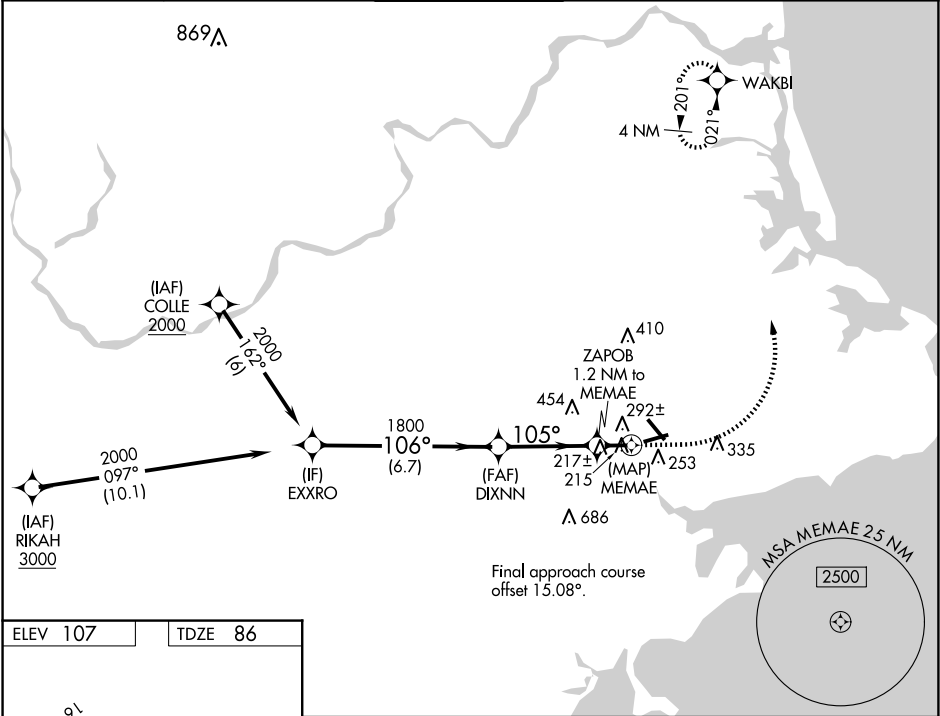


WAAS CH 65640 W09A	APP CRS 105°	Rwy Idg TDZE 86 Apt Elev 107	4755
--	------------------------	--	-------------

RNAV (GPS) RWY 9
BEVERLY RGNL (BVY)

RNP APCH - GPS. Rwy 9 helicopter visibility reduction below 1 SM NA. Straight-in Rwy 9 NA at night, Circling Rwy 9 NA at night.			MISSED APPROACH: Climb to 600 then climbing left turn to 2000 direct WAKBI and hold.	
ATIS 119.2	BOSTON APP CON 124.4 279.6	BEVERLY TOWER★ 125.2 (CTAF) 0	GND CON 121.6	UNICOM 122.95



NE-1, 10 JUL 2025 to 07 AUG 2025

NE-1, 10 JUL 2025 to 07 AUG 2025