

| | | |
|--|------------------------|--|
| WAAS CH 82004 W05A | APP CRS 050° | Rwy Idg 10960 TDZE 93 Apt Elev 93 |
|--|------------------------|--|

APP CRS
050°

| | |
|----------|--------------|
| Rwy ldg | 10960 |
| TDZE | 93 |
| Apt Elev | 93 |

RNAV (GPS) RWY 5

KINSTON RGNL JETPORT AT STALLINGS FLD (ISO)

RNP APCH - GPS.

- V** For uncompensated Baro-VNAV systems, LNAV/VNAV NA below -15°C or above 54°C. Baro-VNAV and VDP NA when using GSB altimeter setting. When local altimeter setting not received, use GSB altimeter setting: increase LPV DA to 336 feet; increase LNAV/VNAV DA to 529 feet and all visibilities to RVR 4000; increase all MDAs 60 feet and LNAV visibility Cat C/D to RVR 4500 and Circling visibility Cat D ¼ SM. For inop ALS, increase LNAV/VNAV all Cats visibility to RVR 4500 and LNAV Cats A and B visibility to RVR 5500 and Cats C and D to RVR 6000. For inop ALS when using GSB altimeter setting, increase LNAV Cats A and B visibility to RVR 5500 and Cats C and D to 1 ½ mile.
- * RVR 1800 authorized with use of FD or AP or HUD to DA (NA when using GSB altimeter setting).

MALSR



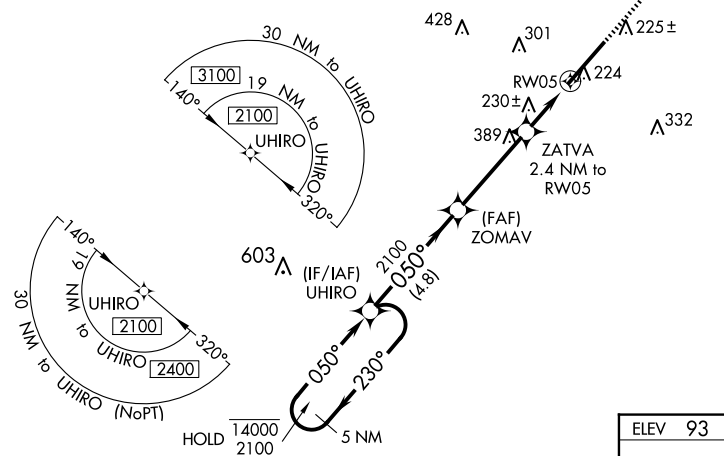
MISSED APPROACH:
Climb to 2500 direct
WINTI and hold.

AWOS-3
132.75

SEYMOUR JOHNSON APP CON ★
127.3 273.6

KINSTON TOWER ★
120.6 (CTAF) **L** 335.55

GND CON
121.9

UNICOM
122.95

MISSED APCH FIX

ELEV 93

 TDZE | 93 |

5 NM Holding Pattern

UHIRO

ZOMAV

2100

14000 ← 230°

2100 ← 050°

2100

ZATVA

2.4 NM to RW05

1 NM to RW05

RW05


900

GP 3.00°

TCH 59

2500

WINTI

| CATEGORY | | A | B | C | D |
|--|-----|--------------------|---|------------------------|----------------------|
| LPV | DA* | 293/24 | | 200 (200-½) | |
| LNAV/VNAV | DA | 486/35 | | 393 (400-¾) | |
| LNAV | MDA | 480/24 387 (400-½) | | 480/35 387 (400-¾) | |
|  CIRCLING | | 580-1 487 (500-1) | | 700-1¾ 607 (700-1¾) | 740-2 647 (700-2) |

RNAV (GPS) RWY 5