

WAAS CH <b>77704</b> <b>W23A</b>	APP CRS <b>230°</b>	Rwy Idg <b>11498</b> TDZE <b>87</b> Apt Elev <b>93</b>
--	------------------------	--

## RNAV (GPS) RWY 23

KINSTON RGNL JETPORT AT STALLINGS FLD (ISO)

**▼** Baro-VNAV NA when using Seymour Johnson AFB altimeter setting. For uncompensated Baro-VNAV systems, LNAV/VNAV NA below -1.5°C (5°F) or above 54°C (130°F). DME/DME RNP-0.3 NA.

**▲** VDP NA with Seymour Johnson AFB altimeter setting. Rwy 23 helicopter visibility reduction below  $\frac{3}{4}$  SM NA. When local altimeter setting not received, use Seymour Johnson AFB altimeter setting and increase LPV DA to 432, LNAV/VNAV DA to 413, and all MDA 60 feet. Increase LPV all Cats and LNAV Cats C and D visibility  $\frac{1}{8}$  mile, and increase LNAV/VNAV all Cats and Circling Cat D visibility  $\frac{1}{4}$  mile.

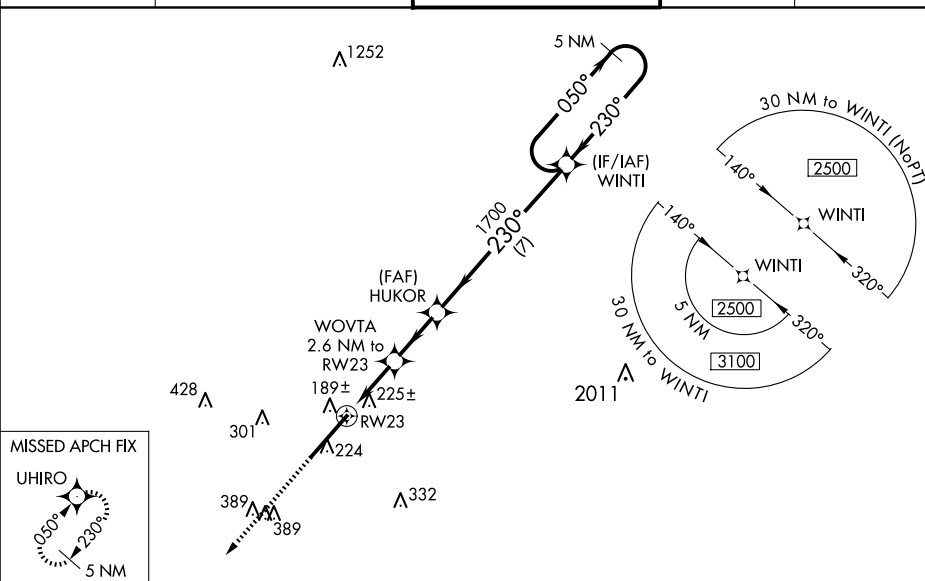
**MISSED APPROACH:**  
Climb to 2100 direct  
UHIRO and hold.

AWOS-3  
132.75

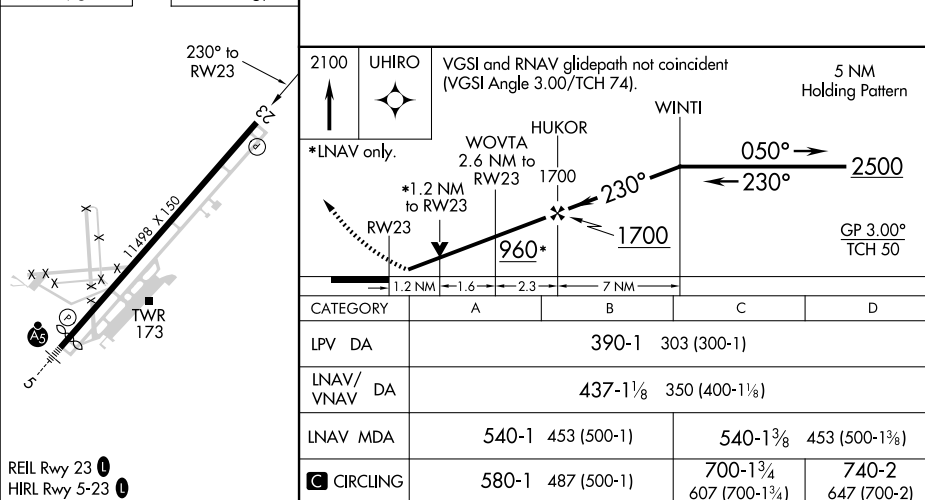
SEYMOUR JOHNSON APP CON ★  
127.3 273.6

KINSTON TOWER ★  
120.6 (CTAF) 335.55

GND CON  
**121.9**

UNICOM  
122.95

ELEV	93		TDZE	87
------	----	--	------	----



## RNAV (GPS) RWY 23