
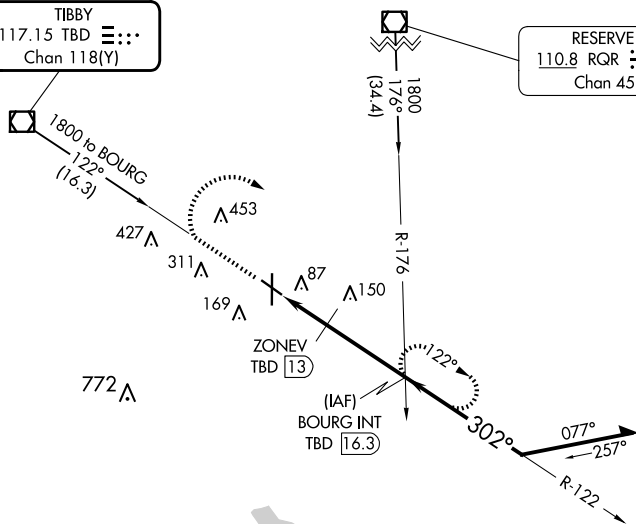


VOR/DME RWY 30
HOUMA-TERREBONNE (HUM)

- MISSED APPROACH:** Climb to 1100 then climbing right turn to 1800 via TBD VOR/DME R-122 to BOURG INT/TBD 16.3 DME and hold.

TIBBY
117.15 TBD 
Chan 118(Y)

RESERVE
110.8 RQR $\begin{smallmatrix} \text{---} \\ \text{---} \end{smallmatrix} \cdot \text{---}$
Chan 45

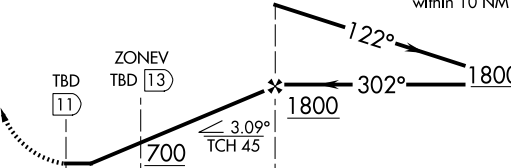


MSA TBD 25 NM

3100

[illegible]

REIL Rwys 12, 30 and 36 **L**
MIRL Rwys 12-30 and 18-36 **L**

1100 ↑	1800 TBD R-122	BOURG INT	VGS1 and descent angles not coincident (VGS1 Angle 3.00/TCH 39).			
						
CATEGORY	A	B	C	D		
S-30	400-1	391 (400-1)	400-1 $\frac{1}{8}$	391 (400-1 $\frac{1}{8}$)		
C CIRCLING	480-1	471 (500-1)	760-2 $\frac{1}{4}$ 751 (800-2 $\frac{1}{4}$)	760-2 $\frac{1}{2}$ 751 (800-2 $\frac{1}{2}$)		