

WAAS
CH **61013**
W30A

APP CRS
304°

Rwy Idg **4999**
TDZE **9**
Apt Elev **9**

RNAV (GPS) RWY 30

HOUMA-TERREBONNE (HUM)

▼

⚠

For uncompensated Baro-VNAV systems, LNAV/VNAV NA below -15°C (5°F) or above 49°C (120°F). DME/DME RNP-0.3 NA. Visibility reduction by helicopters NA.
When local altimeter setting not received, use Louis Armstrong New Orleans Intl altimeter setting: increase LPV DA to 336, LNAV/VNAV DA to 489, and all visibilities ¼ SM; increase all MDAs 80 feet and visibility Cats C and D ½ SM. Baro-VNAV NA when using Louis Armstrong New Orleans Intl altimeter setting.

MISSED APPROACH: Climb to 1800 direct NACIV and hold.

ATIS 120.25	NEW ORLEANS APP CON 118.9 350.35	HOUMA TOWER★ 125.3 (CTAF) 0 346.3	GND CON 123.875	CLNC DEL 118.9 (When twr closed)	UNICOM 122.95
-----------------------	--	---	---------------------------	---	-------------------------

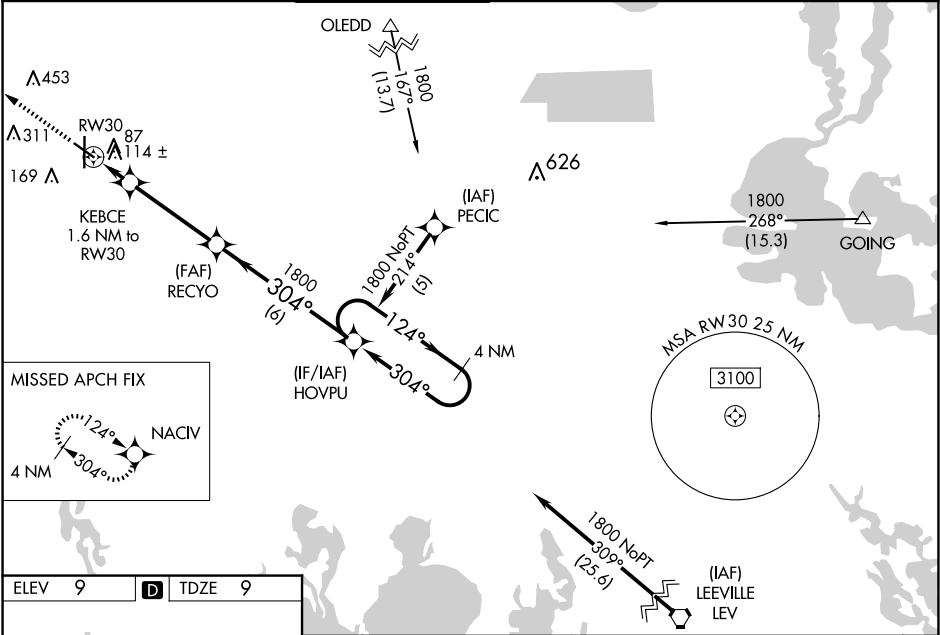


Diagram showing Runway 12, 30, and 36. Runway 12 is 4999 x 185. Runway 30 is 6509 x 150. Runway 36 is 36. A Tower (TWR) is located at 88. A VORTAC station is located at 81.1. A distance of 100 is marked. A distance of 1.6 NM is marked. A distance of 3.0 NM is marked.