

WAAS CH <b>99413</b> <b>W18A</b>	APP CRS <b>179°</b>	Rwy Ldg <b>6143</b> TDZE <b>8</b> Apt Elev <b>9</b>
----------------------------------------	------------------------	-----------------------------------------------------------

RNAV (GPS) RWY 18

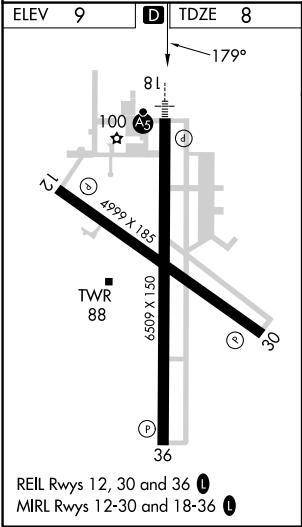
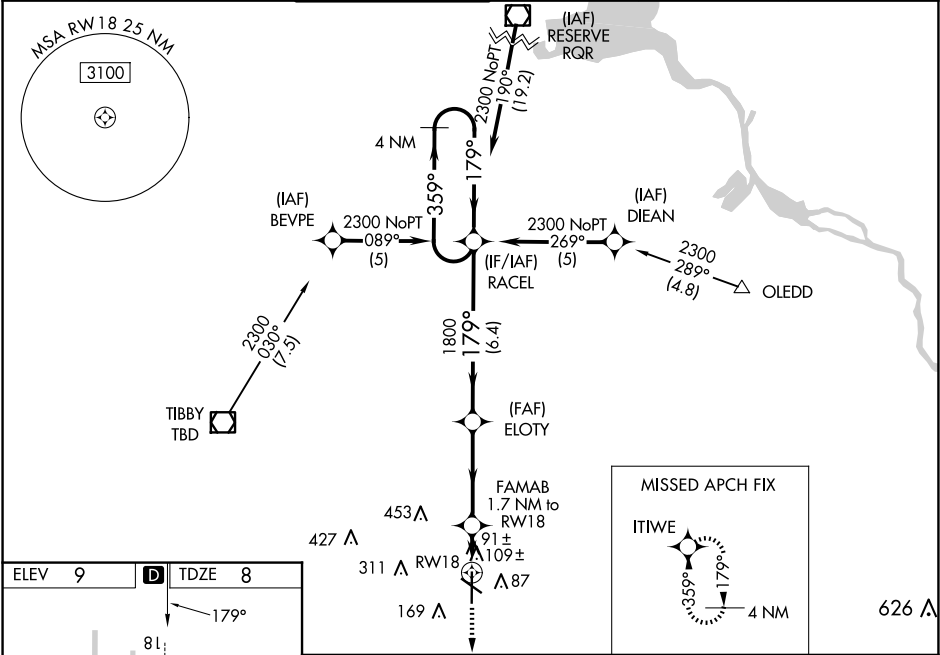
HOUMA-TERREBONNE (HUM)

Baro-VNAV NA when using Louis Armstrong New Orleans Intl altimeter setting. For uncompensated Baro-VNAV systems, LNAV/VNAV NA below -15°C (5°F) or above 49°C (120°F). DME/DME RNP-0.3 NA. When local altimeter setting not received, use Louis Armstrong New Orleans Intl altimeter setting: increase LPV DA to 285, increase LNAV/VNAV DA to 526 and all visibilities ½ SM; increase all MDAs 80 feet and visibility Cats C and D ¼ SM. For inop ALS when using Louis Armstrong New Orleans Intl altimeter setting increase all LPV visibilities to ¾ SM, increase all LNAV/VNAV visibilities and LNAV Cats C and D visibility to 1 ¾ SM.

MALSR

MISSED APPROACH:  
Climb to 1900 direct  
ITWE and hold.

ATIS <b>120.25</b>	NEW ORLEANS APP CON <b>118.9 350.35</b>	HOUMA TOWER ★ <b>125.3</b> (CTAF) <b>346.3</b>	GND CON <b>123.875</b>	CLNC DEL <b>118.9</b> (When twr closed)	UNICOM <b>122.95</b>
-----------------------	--------------------------------------------	---------------------------------------------------	---------------------------	-----------------------------------------------	-------------------------



1900	ITWE	VGSI and RNAV glidepath not coincident (VGSI Angle 3.00/TCH 52).		4 NM
*LNAV only.		RACEL		Holding Pattern
FAMAB 1.7 NM to RW18		ELOTY	359° → 2300	
RW18		600*	← 179°	
1.7 NM		3.7 NM	6.4 NM	
CATEGORY	A	B	C	D
LPV DA	208-½		200 (200-½)	
LNAV/VNAV DA	449-¾		441 (500-¾)	
LNAV MDA	440-½	432 (500-½)	440-¾	432 (500-¾)
CIRCLING	480-1	471 (500-1)	760-2¼ 751 (800-2¼)	760-2½ 751 (800-2½)