

WAAS CH <b>56313</b> <b>W12A</b>	APP CRS <b>124°</b>	Rwy Idg TDZE <b>8</b> Apt Elev <b>9</b>	<b>4843</b>
--	------------------------	---	-------------

RNAV (GPS) RWY 12

HOUMA-TERREBONNE (HUM)

⚠

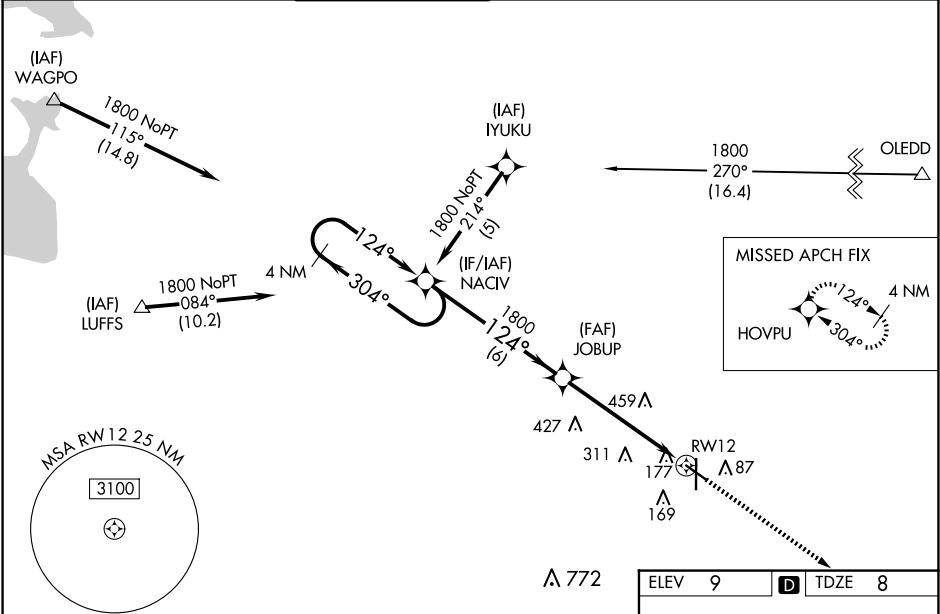
For uncompensated Baro-VNAV systems, LNAV/VNAV NA below -15°C (5°F) or above 49°C (120°F). DME/DME RNP-0.3 NA. Visibility reduction by helicopters NA.

⚠

When local altimeter setting not received, use Louis Armstrong New Orleans Intl altimeter setting: increase LPV DA to 370 feet and all visibilities ¼ SM; increase LNAV/VNAV DA to 567 feet and all visibilities ¼ SM; increase all MDAs 80 feet and visibility Cats B, C and D ¼ SM. Baro-VNAV NA when using Louis Armstrong New Orleans Intl altimeter setting.

MISSED APPROACH: Climb to 1800 direct HOVPU and hold.

ATIS <b>120.25</b>	NEW ORLEANS APP CON <b>118.9 350.35</b>	HOUMA TOWER ★ <b>125.3 (CTAF) 0 346.3</b>	GND CON <b>123.875</b>	CLNC DEL <b>118.9</b> (When twr closed)	UNICOM <b>122.95</b>
-----------------------	--	--	---------------------------	---	-------------------------



4 NM Holding Pattern				
VGSI and RNAV glidepath not coincident (VGSI Angle 3.00/TCH 43).				
CATEGORY	A	B	C	D
LPV DA	293-7⁄8 285 (300-7⁄8)			
LNAV/VNAV DA	490-13⁄8 482 (500-13⁄8)			
LNAV MDA	680-1	672 (700-1)	680-17⁄8	672 (700-17⁄8)
CIRCLING	680-1	671 (700-1)	760-2¼ 751 (800-2¼)	760-2½ 751 (800-2½)

