

LOC I-HUM  
**108.5**

APP CRS  
**179°**

Rwy Ldg  
TDZE  
Apt Elev  
**6143**  
**8**  
**9**

ILS or LOC RWY 18

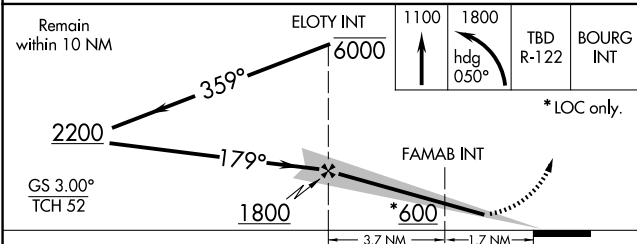
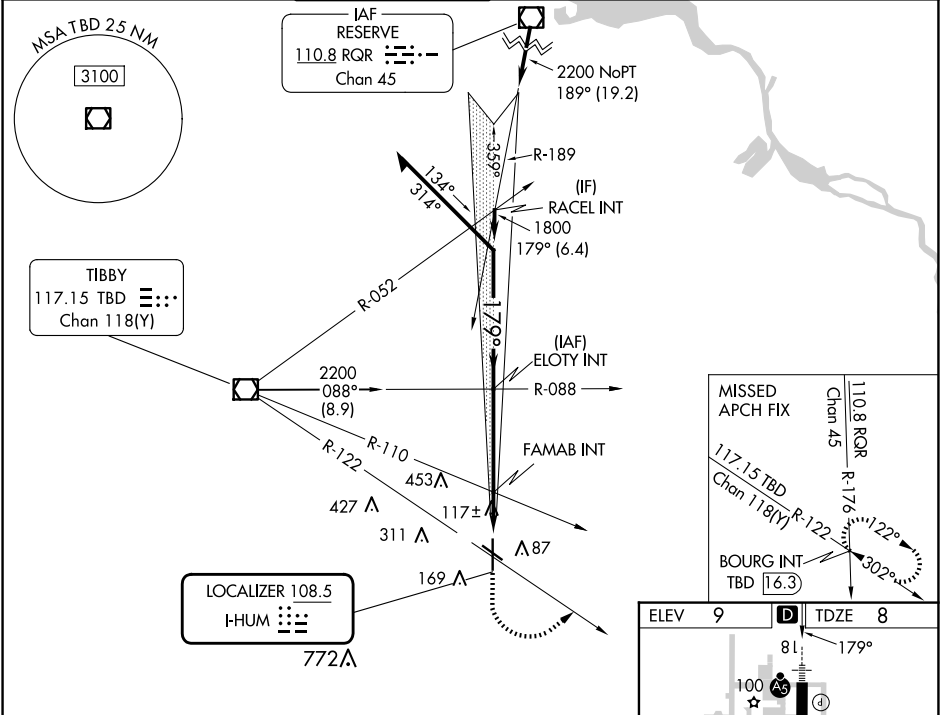
HOUMA-TERREBONNE (HUM)

▼ When local altimeter setting not received, use Louis Armstrong New Orleans Intl altimeter setting: increase DA to 285 feet; increase all MDA 80 feet and S-LOC 18 Cat C/D visibility ¼ SM and Circling Cat C/D visibility ¼ SM. For inop ALS increase S-LOC 18 Cat C/D visibility to 1 SM. For inop ALS when using Louis Armstrong New Orleans Intl altimeter setting increase S-ILS 18 all Cats visibility ⅔ SM.

MALSR

MISSED APPROACH: Climb to 1100 then climbing left turn to 1800 on heading 050° and TBD VOR/DME R-122 to BOURG INT/TBD 16.3 DME and hold.

ATIS <b>120.25</b>	NEW ORLEANS APP CON <b>118.9 350.35</b>	HOUMA TOWER ★ <b>125.3 (CTAF) 0 346.3</b>	GND CON <b>123.875</b>	CLNC DEL <b>118.9</b> (When twr closed)	UNICOM <b>122.95</b>
-----------------------	--	--	---------------------------	---	-------------------------



CATEGORY	A	B	C	D
S-ILS 18	208-½	200 (200-½)		
S-LOC 18	380-½	372 (400-½)	380-⅝	372 (400-⅝)
CIRCLING	480-1	471 (500-1)	760-2¼ 751 (800-2¼)	760-2½ 751 (800-2½)

REIL Rwy  
12, 30, and 36 1 36

MIRL Rwy  
12-30 and 18-36 1

FAF to MAP 5.4 NM

Knots

Min:Sec

60

90

120

150

180

5:24

3:36

2:42

2:10

1:48