

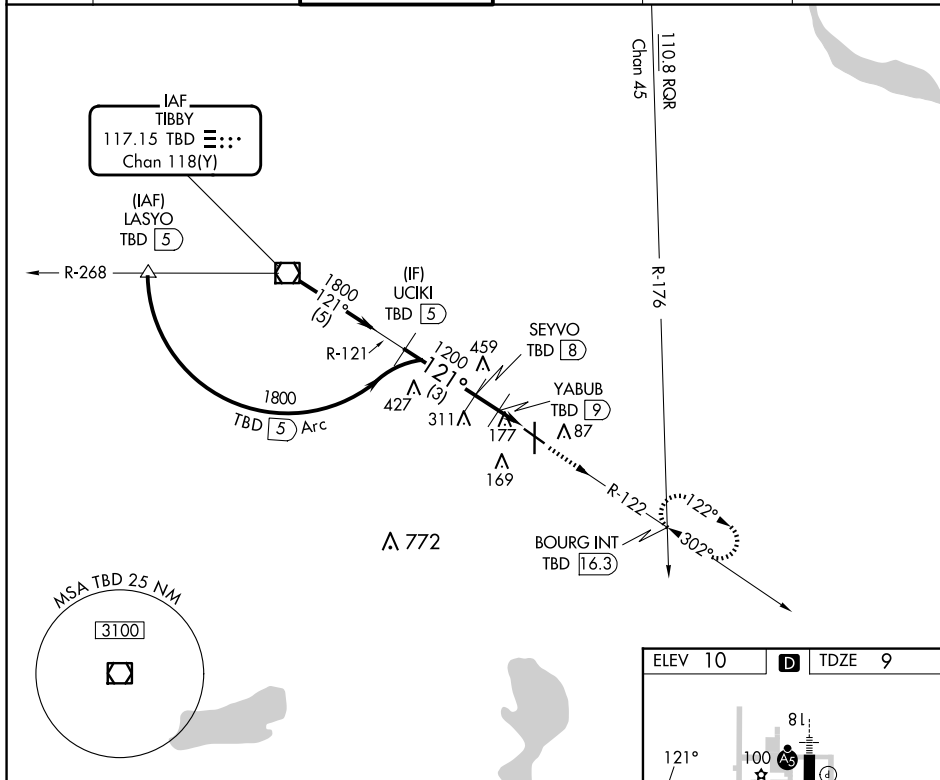
VOR/DME TBD 117.15 Chan 118(Y)	APP CRS 121°	Rwy Idg 4843 TDZE 9 Apt Elev 10
--	------------------------	--

COPTER VOR/DME RWY 12
HOUMA-TERREBONNE (HUM)

T When local altimeter setting not received, use Louis
A Armstrong New Orleans Intl altimeter setting and
increase MDA 80 feet.

MISSED APPROACH: Climb to 1800 via TBD VOR/DME R-122 to BOURG INT/16.3 DME and hold.

ATIS 120.25	NEW ORLEANS APP CON 118.9 350.35	HOUMA TOWER ★ 125.3 (CTAF) 0 346.3	GND CON 123.875	CLNC DEL 118.9 (When twr closed)	UNICOM 122.95
-----------------------	--	--	---------------------------	---	-------------------------



Procedure Turn NA

UCKI
TBD (5)

1800

121°

SEYVO
TBD (8)

YABUB
TBD (9)

5.03°
HCH 45

1200

640

TBD
10.2

3 NM

1 NM

1.2 NM

CATEGORY

COPTER

H-12

440- $\frac{3}{4}$ 431 (500- $\frac{3}{4}$)

1800

TBD R-122

BOURG INT

