

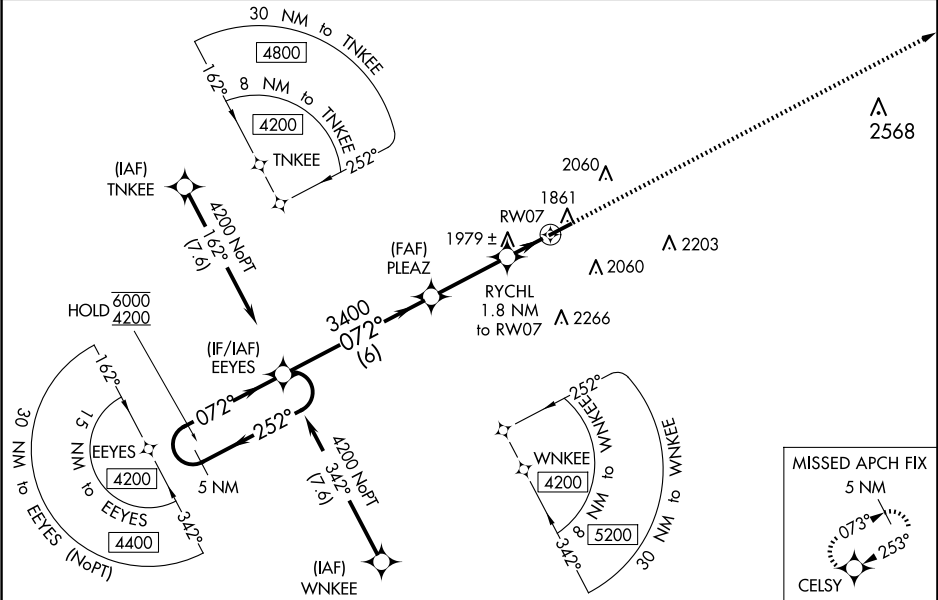
WAAS CH <b>82116</b> <b>W07A</b>	APP CRS <b>072°</b>	Rwy Idg TDZE Apt Elev	<b>5503</b> <b>1817</b> <b>1817</b>
--	------------------------	-----------------------------	---

RNAV (GPS) RWY 7

DUBOIS RGNL (DUJ)

RNP APCH.	MISSED APPROACH: Climb to 4200 direct CELSY and hold.
<div><div>⚠</div><div>Circling NA for Cat D south of Rwy 7-25. For uncompensated Baro-VNAV systems, LNAV/VNAV NA below -21°C or above 54°C.</div></div>	

ASOS <b>119.025</b>	CLEVELAND CENTER <b>126.725 291.65</b>	UNICOM <b>123.0 (CTAF) 0</b>
------------------------	---	---------------------------------



ELEV 1817		TDZE 1817	
5 NM Holding Pattern		VGSI and RNAV glidepath not coincident (VGSI Angle 3.00/TCH 28).	
GP 3.00° TCH 45°		*2420	
CATEGORY	A	B	C
LPV DA	2017-3/4	200 (200-3/4)	
LNAV/VNAV DA	2160-1	343 (400-1)	
LNAV MDA	2240-1	423 (500-1)	2240-1 1/4 423 (500-1 1/4)
CIRCLING	2320-1 503 (600-1)	2360-1 543 (600-1)	2380-1 1/2 563 (600-1 1/2)
DUBOIS, PENNSYLVANIA		DUBOIS RGNL (DUJ)	
Amdt 3 25FEB21		RNAV (GPS) RWY 7	