

DUBOIS, PENNSYLVANIA

AL-5035 (FAA)

23054

WAAS CH <b>97407</b> <b>W25A</b>	APP CRS <b>252°</b>	Rwy Idg <b>5503</b> TDZE <b>1817</b> Apt Elev <b>1817</b>
--	------------------------	---

## RNAV (GPS) RWY 25

DUBOIS RGNL (DUJ)

RNP APCH.

**T** Circling NA for Cat D south of Rwy 7-25. For uncompensated Baro-VNAV systems, LNAV/VNAV NA below -21°C or above 54°C. For inop ALS **A** increase LNAV Cat C/D visibility to 1 $\frac{3}{8}$  SM.

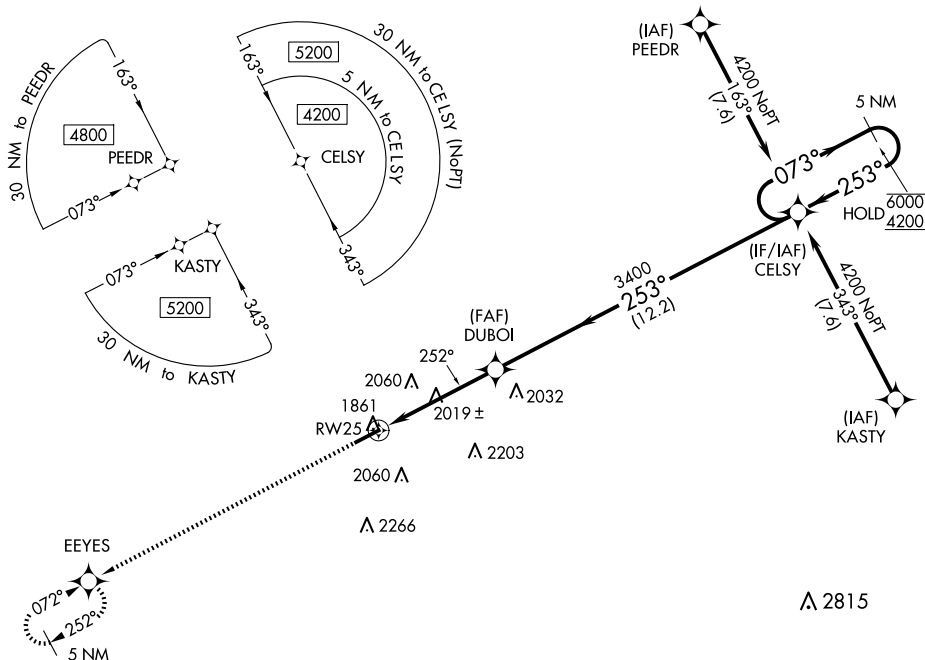
MALSR



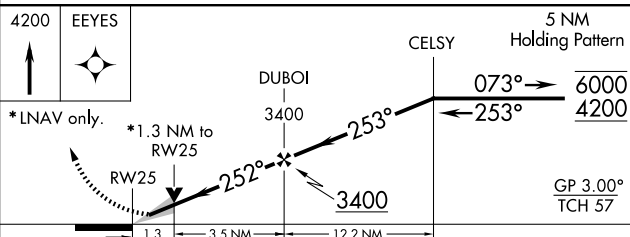
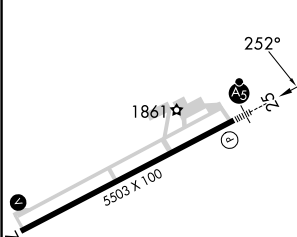
**MISSED APPROACH:** Climb to 4200 direct EYES and hold.


ASOS  
119.025

CLEVELAND CENTER  
126.725 291.65

UNICOM  
123.0 (CTAF) **L**

ELEV	1817	<b>D</b>	TDZE	1817
------	------	----------	------	------



CATEGORY		A		B		C		D	
LPV	DA	2017-1/2				200 (200-1/2)			
LNAV/ VNAV	DA	2140-1/2				323 (400-1/2)			
LNAV MDA		2280-1/2 463 (500-1/2)				2280-1 463 (500-1)			
	CIRCLING	2320-1 503 (600-1)		2360-1 543 (600-1)		2380-1 1/2 563 (600-1 1/2)		2400-2 583 (600-2)	

HIRL Rwy 7-25 **L**  
REIL Rwy 7 **L**

DUBOIS, PENNSYLVANIA

Amdt 2 25FEB21

41°11'N-78°54'W

DUBOIS RGNL (DUJ)

RNAV (GPS) RWY 25