

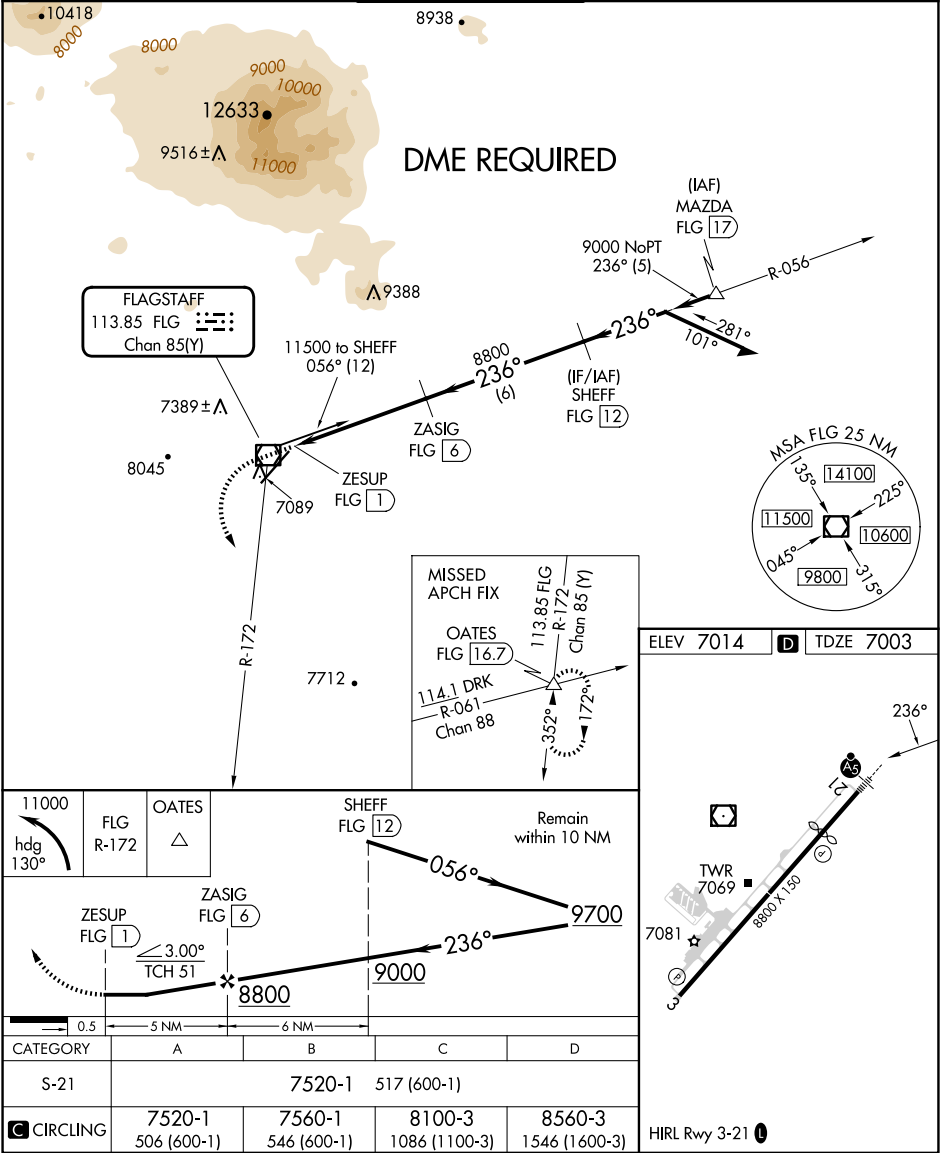
VOR/DME FLG	APP CRS	Rwy Idg	7000
113.85	236°	TDZE	7003
Chan 85(Y)		Apt Elev	7014

VOR RWY 21

FLAGSTAFF PULLIAM (FLG)

<div><div>▼</div><div>▲</div></div> <div>Rwy 21 helicopter visibility reduction below 1 SM NA. DME required. Inop table does not apply to S-21 Cats A/B. Night landing: Rwy 21, operational VGSI required, remain on or above VGSI glidepath until threshold.</div>	<div>MALSR</div> <div></div>	<div>MISSED APPROACH: Climbing left turn to 11000 on heading 130° and FLG R-172 to OATES INT/16.7 DME, continue climb-in-hold.</div>
---	------------------------------	--

ATIS 125.8	PHOENIX APP CON 126.375 236.775	FLAGSTAFF TOWER ★ 134.55 (CTAF) 239.25	GND CON 121.9	UNICOM 122.95
---------------	------------------------------------	---	------------------	------------------



SW-4, 10 JUL 2025 to 07 AUG 2025

SW-4, 10 JUL 2025 to 07 AUG 2025