

WAAS CH 45718 W03A	APP CRS 031°	Rwy Idg 8800 TDZE 7014 Apt Elev 7014
--	------------------------	---

RNAV (GPS) RWY 3
FLAGSTAFF PULLIAM (FLG)

T
A

For uncompensated Baro-VNAV systems, LNAV/VNAV NA below -19°C (-2°F) or above 44°C (112°F).
DME/DME RNP-0.3 NA.

MISSED APPROACH: Climb to 7500 then climbing right turn to 9500 direct TAWNE and hold.

ATIS 125.8	PHOENIX APP CON 126.375 236.775	FLAGSTAFF TOWER ★ 134.55 (CTAF) 0 239.25	GND CON 121.9	UNICOM 122.95
----------------------	---	--	-------------------------	-------------------------

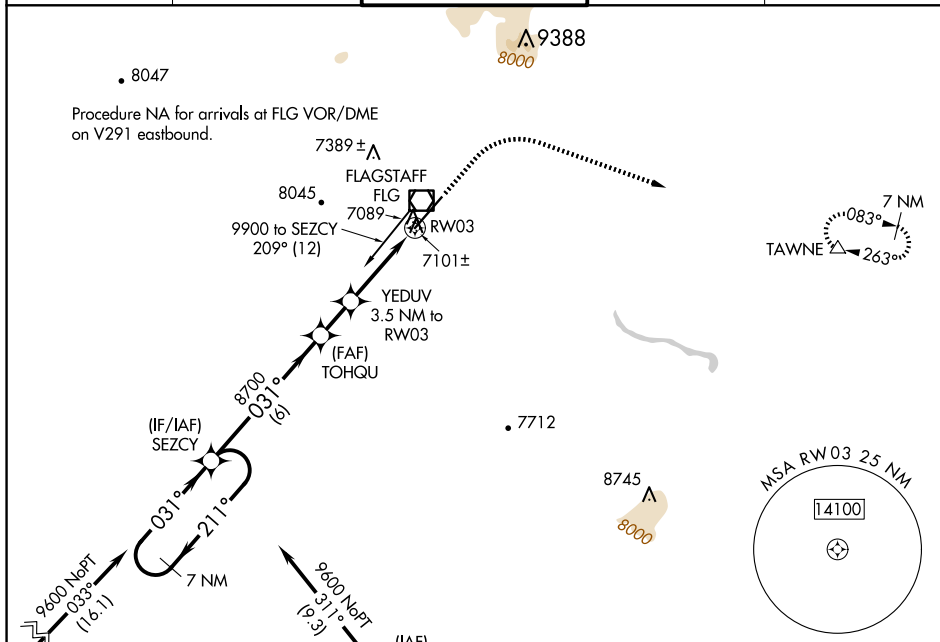


Diagram illustrating the HIRL Rwy 3-21 instrument approach procedure. The diagram shows the approach path, including the 7 NM Holding Pattern, the 8700 feet altitude, and the final approach segment. Key waypoints and distances are marked: SEZCY, TOHQU, YEDUV, and TAWNE. The diagram also shows the runway layout, including the runway centerline, runway width, and the runway end point. The diagram is labeled with 'ELEV 7014', 'TDZE 7014', and 'HIRL Rwy 3-21'.

RNAV (GPS) RWY 3