

CORPUS CHRISTI, TEXAS

AL-5032 (FAA)

23306

WAAS CH 69617 W36A	APP CRS 355°	Rwy Idg TDZE Apt Elev	6080 40 46
--	------------------------	-----------------------------	---------------------------------------

RNAV (GPS) Y RWY 36

CORPUS CHRISTI INTL (CRP)

RNP APCH - GPS.

T For uncompensated Baro-VNAV systems, LNAV/VNAV NA below -1°C or above 54°C. For inop ALS, increase LPV Cat E visibility to RVR 4000, LNAV/VNAV all
A Cats visibility to RVR 4500 and LNAV Cat E visibility to RVR 6000.
*RVR 1800 authorized with use of FD or AP or HUD to DA.

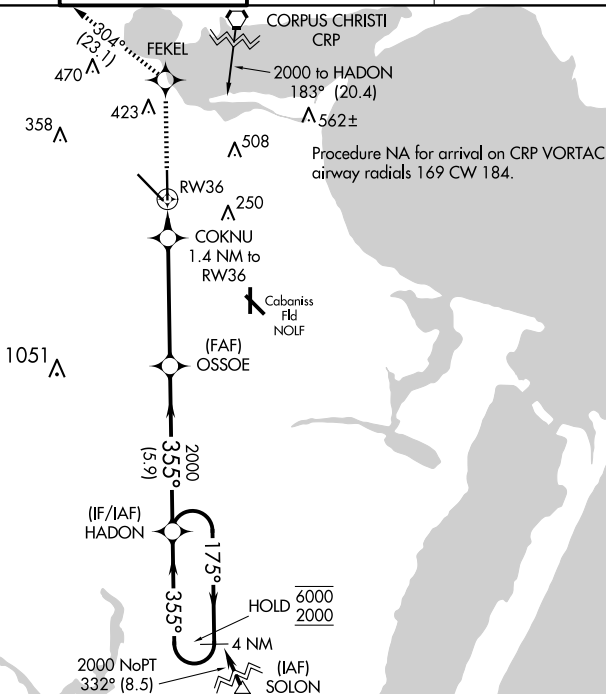
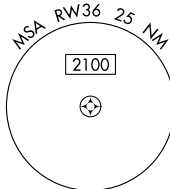
MALSR



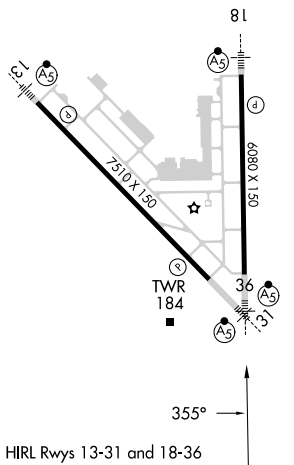
MISSED APPROACH: Climb to 2000 direct FEKEL and on track 304° to ATHIS and hold.


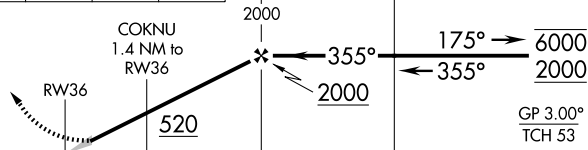

ATIS 126.8	CORPUS APP CON 120.9 348.725	CORPUS TOWER 119.4 257.8	GND CON 121.9 269.15	CLNC DEL 118.55
---------------	---------------------------------	-----------------------------	-------------------------	--------------------

MISSED APCH FIX



ELEV	46	D	TDZE	40
------	----	----------	------	----



2000 ↑	FEKEL 	tr 304° △					
 <p>COKNU 1.4 NM to RW36</p> <p>RW36</p> <p>OSSEO 2000</p> <p>HADON 4 NM Holding Pattern</p> <p>520</p> <p>2000</p> <p>175° → 6000 ← 355° 2000</p> <p>GP 3.00° TCH 53</p>							
CATEGORY	A	B	C	D		E	
LPV DA *	240/24 200 (200-½)						
INAV/ VNAV DA	356/24 316 (400-½)						
INAV MDA	440/24	400 (400-½)	440/35		400 [400-¾]		
 CIRCLING	500-1 454 (500-1)	780-1 734 (600-1)	820-2¼ 774 (800-2¼)	820-2½ 774 (800-2½)	820-2¾ 774 (800-2¾)		

CORPUS CHRISTI, TEXAS

Amdt 3A 02NOV23

27°46'N-97°30'W

CORPUS CHRISTI INTL (CRP)

RNAV (GPS) Y RWY 36

SC-3, 10 JUL 2025 to 07 AUG 2025