

APP CRS 132°	Rwy Idg TDZE Apt Elev	7510 46 46
------------------------	-----------------------------	---------------------------------------

RNAV (RNP) Z RWY 13
CORPUS CHRISTI INTL (CRP)

T

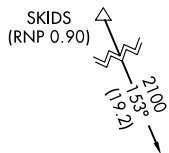
For uncompensated Baro-VNAV systems, procedure NA below -1°C (31°F) or above 54°C (130°F). GPS required.

MALSR

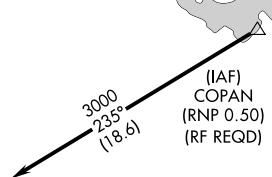


MISSED APPROACH: Climb to 2000 on track 132° to JOGAT and on track 178° to SOLON and hold.

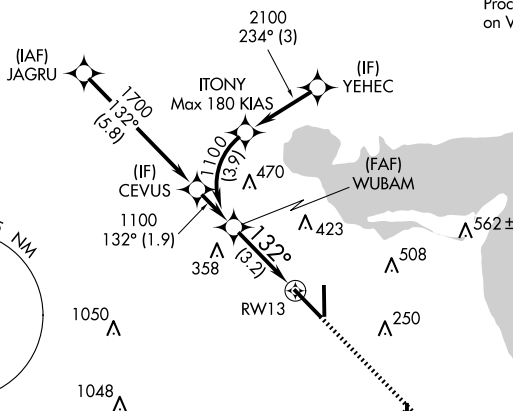
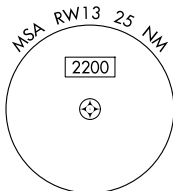
ATIS 126.8	CORPUS APP CON 120.9 348.725	CORPUS TOWER 119.4 257.8	GND CON 121.9 269.15	CLNC DEL 118.55
---------------	---------------------------------	-----------------------------	-------------------------	--------------------



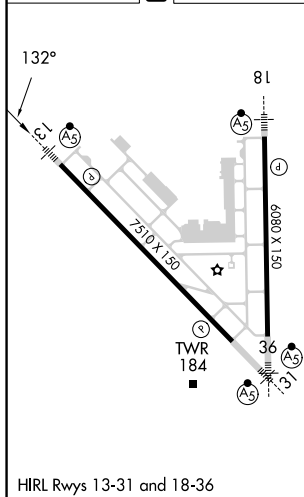
Procedure NA for arrivals at SKIDS
on V163 northwest bound.




Procedure NA for arrivals at COPAN
on V20-70 northeast bound.

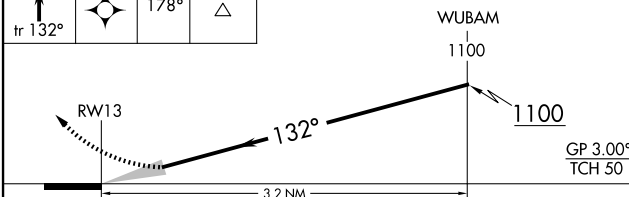


ELEV 46	D	TDZE 46
---------	----------	---------



2000 ↑ tr 132°	JOGAT 	tr 178°	SOLON △
----------------------	--	------------	------------

See planview for multiple IF locations.



CATEGORY	A	B	C	D
RNP 0.30 DA	394/30 348 (400- ⁵ / ₈)			