

LOC/DME I-EKI
110.3
Chan **40**

APP CRS
312°

Rwy Idg **7510**
TDZE **43**
Apt Elev **46**

LOC RWY 31
CORPUS CHRISTI INTL (CRP)

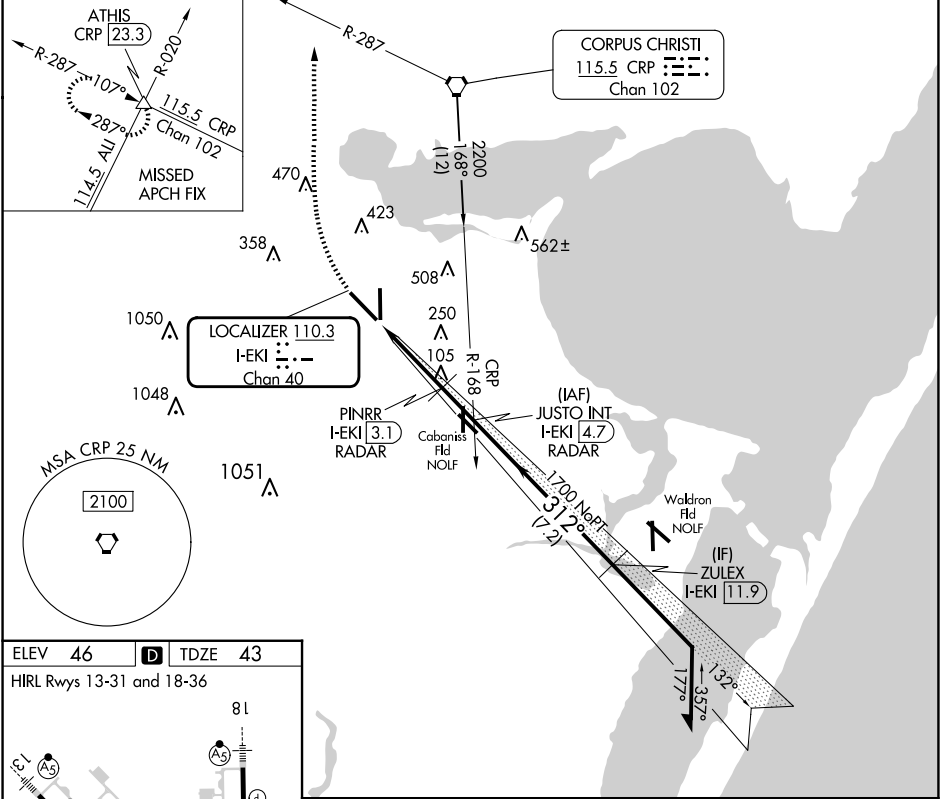
DME or RADAR required.
RADAR required for procedure entry at ZULEX.

For inop ALS, increase S-LOC 31 Cts C, D, and E
visibility to 1 SM.

MALSRR
AS

MISSED APPROACH: Climb to 700 then climbing right
turn to 2000 on heading 335° and CRP VORTAC
R-287 to ATHIS INT/CRP VORTAC 23.3 DME and hold.

ATIS 126.8	CORPUS APP CON 120.9 348.725	CORPUS TOWER 119.4 257.8	GND CON 121.9 269.15	CLNC DEL 118.55
----------------------	--	------------------------------------	--------------------------------	---------------------------



ELEV **46** **D** TDZE **43**
HIRL Rwy 13-31 and 18-36

FAF to MAP 5.1 NM

Knots	60	90	120	150	180
Min:Sec	5:06	3:24	2:33	2:02	1:42

700
↑

2000
hdg 335°
CRP R-287

ATHIS
△

JUSTO INT
I-EKI 4.7
RADAR

Remain
within 15 NM

I-EKI DME Antenna
I-EKI 0.3
I-EKI 0.6

PINRR
I-EKI 3.1
RADAR

3.35°
TCH 50

2200
1300
1700

132°
312°
2000

VGSI and descent angles not
coincident (VGSI Angle 3.00/
TCH 50).

CATEGORY	A	B	C	D	E
S-31	400-1/2	357 (400-1/2)	400-3/8	357 (400-3/8)	
<input checked="" type="checkbox"/> CIRCLING	500-1 454 (500-1)	780-1 734 (800-1)	820-2 1/4 774 (800-2 1/4)	820-2 1/2 774 (800-2 1/2)	820-2 3/4 774 (800-2 3/4)