

LOC/DME I-OYC <u>109.5</u> Chan <b>32</b>	APP CRS <b>355°</b>	Rwy Idg <b>6080</b> TDZE <b>40</b> Apt Elev <b>46</b>
---	------------------------	---

ILS or LOC RWY 36  
CORPUS CHRISTI INTL (CRP)

DME required.

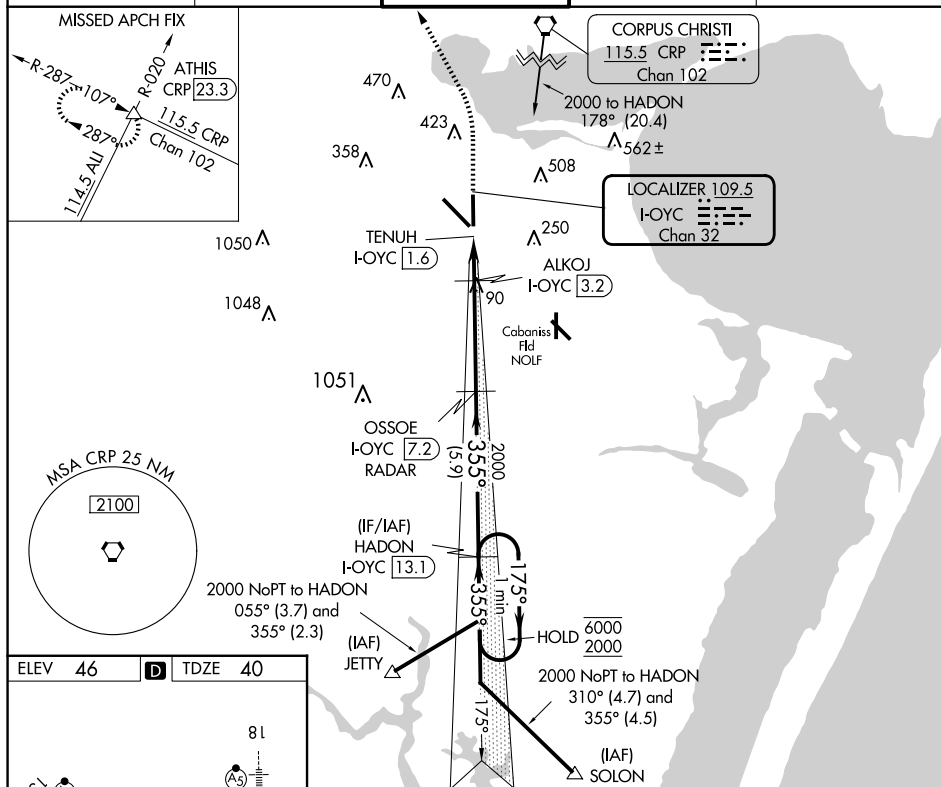
**T** For inop ALS, increase S-ILS 36 Cat E visibility to RVR  
**A** 4000 and S-LOC 36 Cat C/D/E visibility to RVR 4500.

MALS

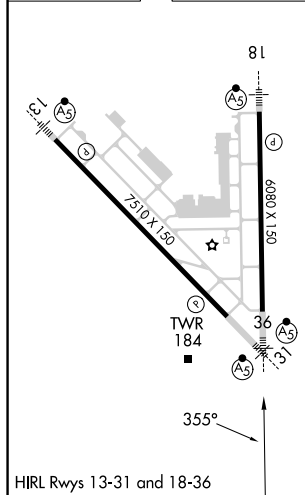


**MISSED APPROACH:** Climb to 700 then climbing left turn to 2000 on heading 338° and CRP VORTAC R-287 to ATHIS INT/CRP 23.3 DME and hold.

ATIS 126.8	CORPUS APP CON 120.9 348,725	CORPUS TOWER 119.4 257.8	GND CON 121.9 269.15	CLNC DEL 118.55
---------------	---------------------------------	-----------------------------	-------------------------	--------------------



ELEV 46	<b>D</b>	TDZE 40
---------	----------	---------



700 ↑	2000 hdg 338°	CRP R-287	ATHIS △	ILS unusable inside DA. LOC unusable within 1.6 DME.				
				OSSOE I-OYC <u>7.2</u> RADAR HADON I-OYC <u>13.1</u> One Minute Holding Pattern				
CATEGORY	A		B		C		D	E
S-ILS 36			240/24		200 (200-½)			
S-LOC 36			340/24		300 (300-½)			
<b>C</b> CIRCLING	500-1 454 (500-1)	780-1 734 (800-1)	820-2¼ 774 (800-2¼)	820-2½ 774 (800-2½)	820-2¾ 774 (800-2¾)	820-3¼ 774 (800-3¼)		