

LOC/DME I-CRP	APP CRS	Rwy Idg	7510
110.3	132°	TDZE	46
Chan 40		Apt Elev	46

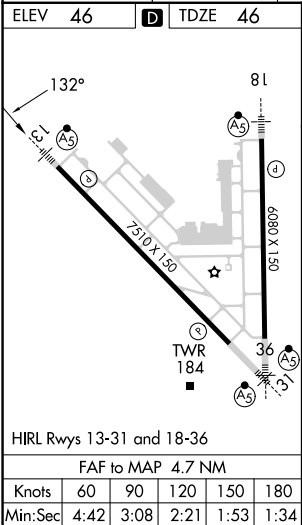
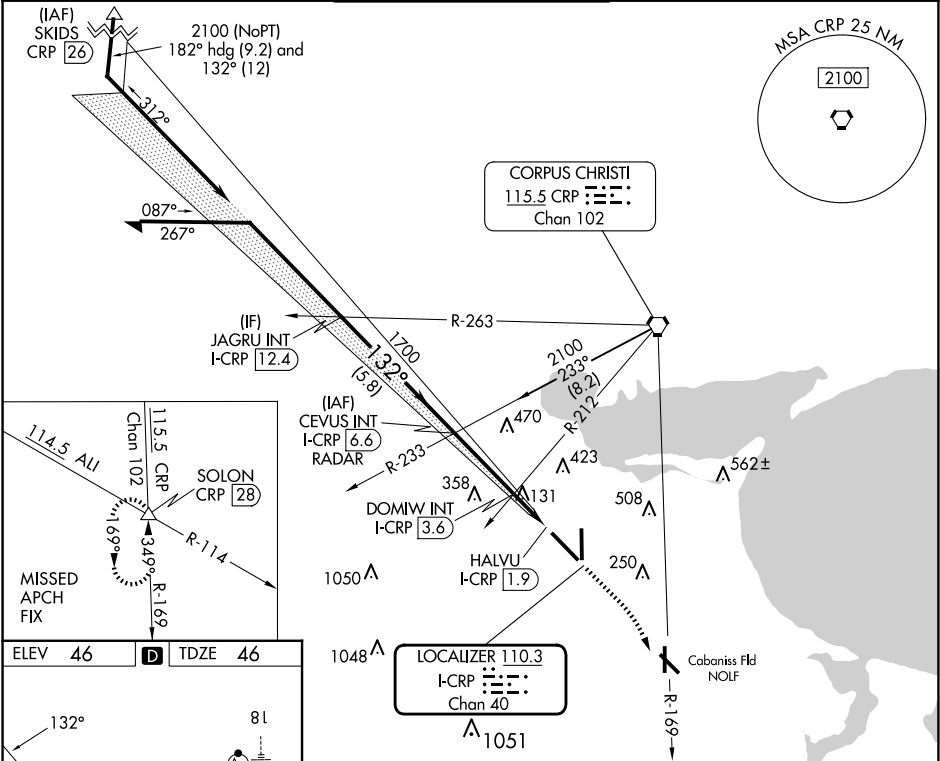
ILS or LOC RWY 13  
CORPUS CHRISTI INTL (CRP)

**⚠** Autopilot coupled approach NA below 260.  
**⚠** For inop ALS, increase S-ILS 13 Cat E visibility to RVR 4000 and S-LOC 13 Cats C, D, and E visibility to RVR 5500.  
\*RVR 1800 authorized with use of FD or AP or HUD to DA.

**MALSR**

**MISSED APPROACH:** Climb to 500 then climbing right turn to 2000 on heading 132° and CRP VORTAC R-169 to SOLON INT/CRP VORTAC 28 DME and hold.

ATIS	CORPUS APP CON	CORPUS TOWER	GND CON	CLNC DEL
126.8	120.9 348.725	119.4 257.8	121.9 269.15	118.55



Remain within 15 NM		CEVUS INT I-CRP 16.6 RADAR		500 ↑	2000 hdg 132° CRP R-169	SOLON △
2100	312°	1700	DOMW INT I-CRP 3.6	I-CRP 2.5	HALVU I-CRP 1.9	
GS 3.00° TCH 50	132°	1700	720			
Use I-CRP DME when on the localizer course.			3 NM	1.1	0.6	0.3
CATEGORY	A	B	C	D	E	
S-ILS 13*	246/24 200 (200-½)					
S-LOC 13	400/24	354 (400-¼)	240/30	354 (400-⅝)		
CIRCLING	500-1 454 (500-1)	780-1 734 (800-1)	820-2½ 774 (800-2¼)	820-2½ 774 (800-2½)	820-2¾ 774 (800-2¾)	

SC-3, 10 JUL 2025 to 07 AUG 2025

SC-3, 10 JUL 2025 to 07 AUG 2025