

COPTER VOR 032°

VOR/DME GRK 111.8 Chan 55	APCH CRS 032°	Rwy Idg TDZE Arpt Elev N/A N/A 910
---	-------------------------	--

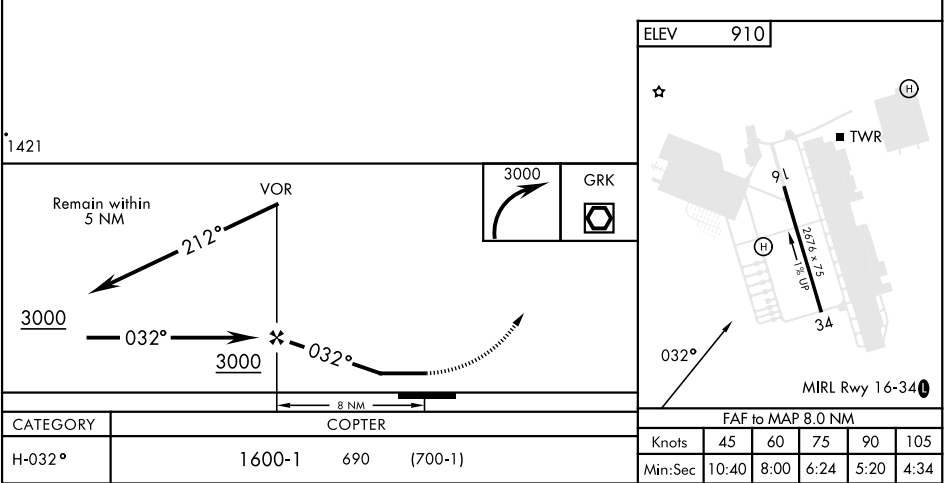
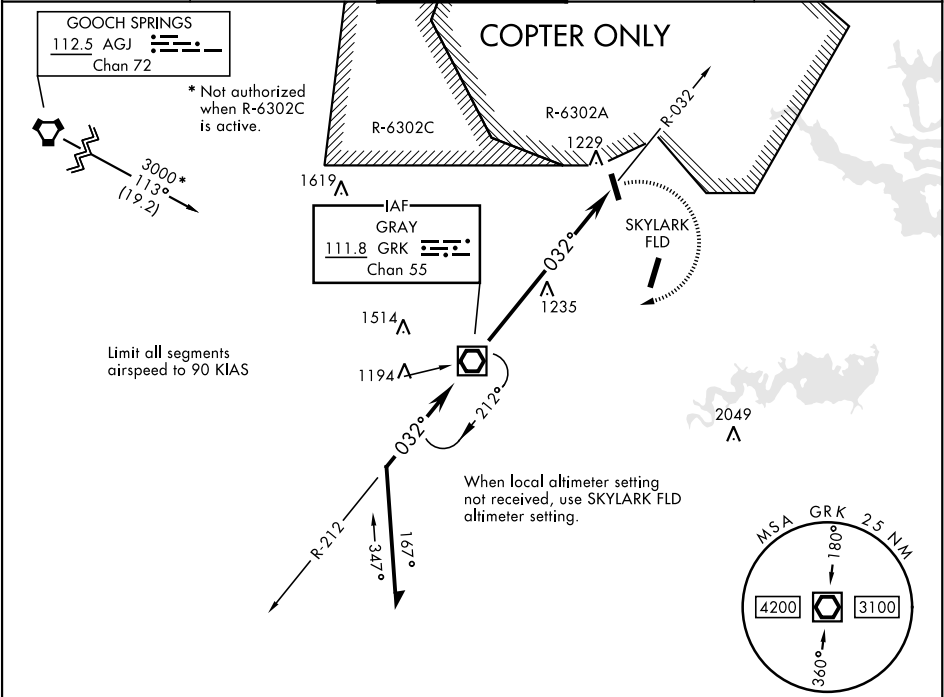
[USA]

YOAKUM DEFRENN AHP (KHLR)

RADAR required for missed approach.

MISSED APPROACH: Climbing right turn to 3000 direct to GRK VOR/DME and hold.

ATIS ★ 138.6	GRAY APP CON 120.075 323.15	TOWER ★ 119.650 269.45	GND CON 133.85 225.4	CLNC DEL 225.4
------------------------	---------------------------------------	----------------------------------	--------------------------------	--------------------------



COPTER VOR 032°

SC-3, 10 JUL 2025 to 07 AUG 2025

SC-3, 10 JUL 2025 to 07 AUG 2025