

VOR/DME	OBK	APP CRS	Rwy Idg	5001
113.0		164°	TDZE	643
Chan 77			Apt Elev	647

VOR RWY 16

CHICAGO EXEC (PWK)

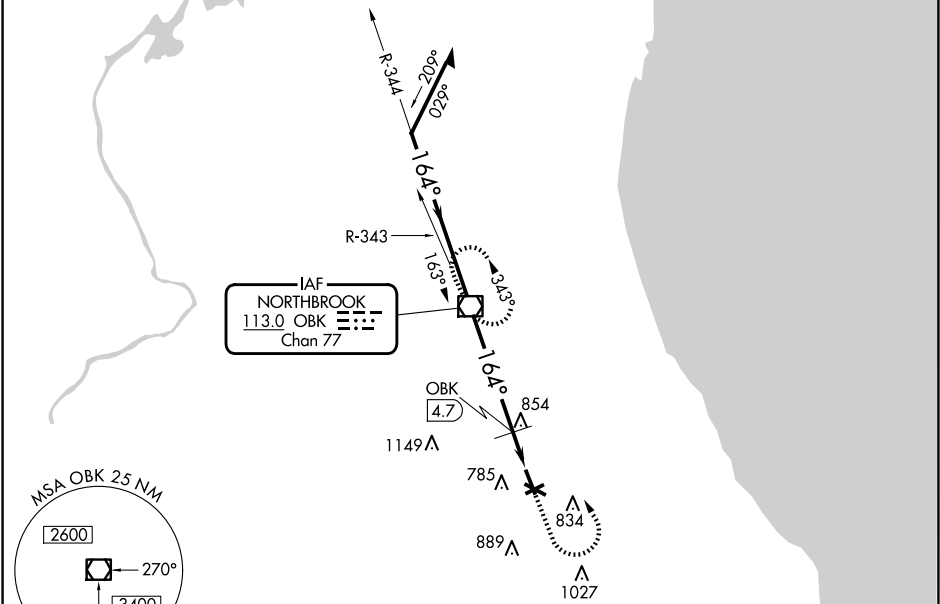
▼

▲

Rwy 16 helicopter visibility reduction below ¾ SM NA. When local altimeter setting not received, use Chicago-O'Hare Intl altimeter setting: increase all MDAs 40 feet and visibility DME minimums S-16 Cats C and D ¼ SM. Circling Rwy 6, 12, 24, 30 NA at night.

MISSED APPROACH: Climb to 1400, then climbing left turn to 2700 direct OBK VOR/DME and hold.

ATIS	CHICAGO APP CON	EXECUTIVE TOWER ★	GND CON	CLNC DEL	CLNC DEL	UNICOM
124.2	120.55 306.925	119.9 (CTAF) 0	121.7	124.7	124.7 (When twr closed)	122.95



A 1468				
OBK VOR/DME				
Remain within 10 NM				
2700 344° 164° 2700 164° 1200				
4.7 NM 1.5 NM				
CATEGORY	A	B	C	D
S-16	1200-1	557 (600-1)	1200-1½ 557 (600-1½)	1200-1¾ 557 (600-1¾)
CIRCLING	1200-1	553 (600-1)	1200-1½ 553 (600-1½)	1460-2¾ 813 (900-2¾)
DME MINIMUMS				
S-16	1120-1	477 (500-1)	1120-1¼ 477 (500-1¼)	1120-1½ 477 (500-1½)
CIRCLING	1140-1 493 (500-1)	1160-1 513 (600-1)	1200-1½ 553 (600-1½)	1460-2¾ 813 (900-2¾)

