

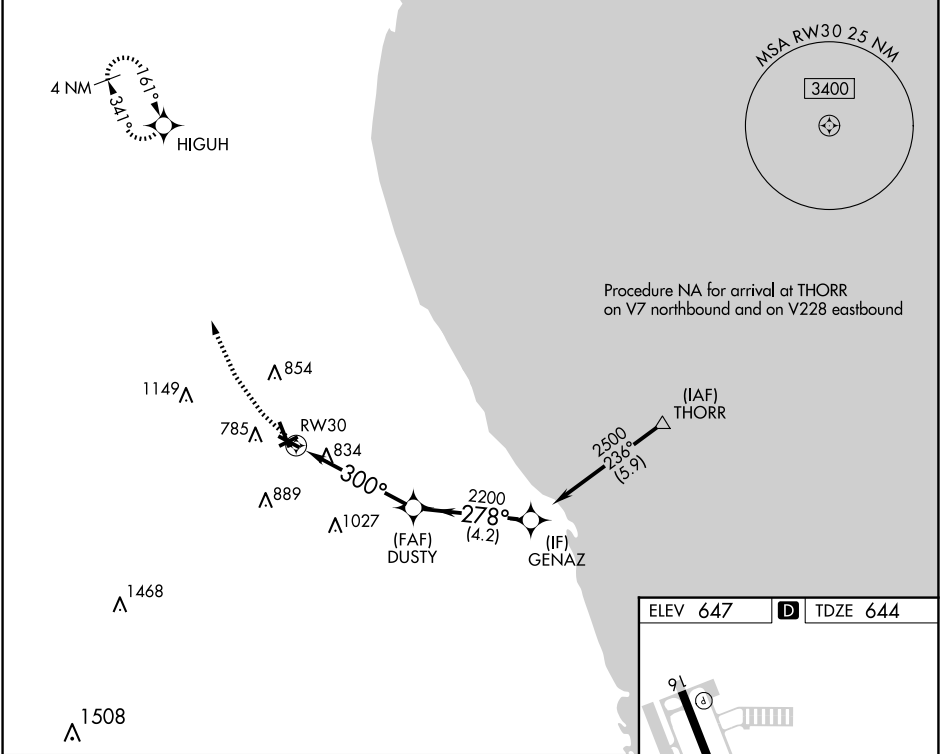
APP CRS	Rwy Idg	3725
300°	TDZE	644
	Apt Elev	647

RNAV (GPS) RWY 30

CHICAGO EXEC (PWK)

RNP APCH - GPS.		MISSED APPROACH: Climbing right turn to 2500 direct HIGUH and hold.
<div><div></div><div></div></div>	Circling Rwy 6, 12, 24, 30 NA at night. Rwy 30 Straight-in procedure NA at night. Rwy 30 helicopter visibility reduction below 1 SM NA.	

ATIS 124.2	CHICAGO APP CON 120.55 306.925	EXECUTIVE TOWER ★ 119.9 (CTAF) 0	GND CON 121.7	CLNC DEL 124.7	CLNC DEL 124.7 (When twr closed)	UNICOM 122.95
---------------	-----------------------------------	-------------------------------------	------------------	-------------------	--	------------------



<div><div>2500</div><div>HIGUH</div></div>		GENAZ		THORR	
<div><div></div><div></div></div>		DUSTY		2500	
<div><div></div><div></div></div>		RW30		2200	
<div><div></div><div></div></div>		300°		278°	
<div><div></div><div></div></div>		4.8 NM		4.2 NM	
<div><div></div><div></div></div>		5.9 NM			
CATEGORY	A	B	C	D	
LNVA MDA	1120-1	476 (500-1)	1120-1 ³ / ₈	476 (500-1 ³ / ₈)	
CIRCLING	1140-1 493 (500-1)	1160-1 513 (600-1)	1200-1 ¹ / ₂ 553 (600-1 ¹ / ₂)	1460-2 ³ / ₄ 813 (900-2 ³ / ₄)	

