

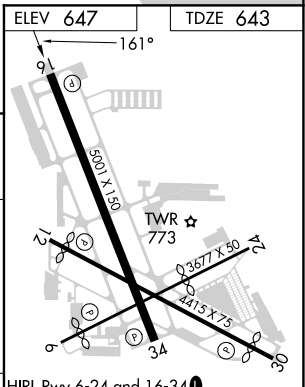
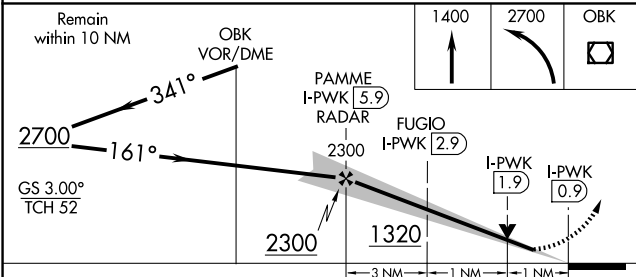
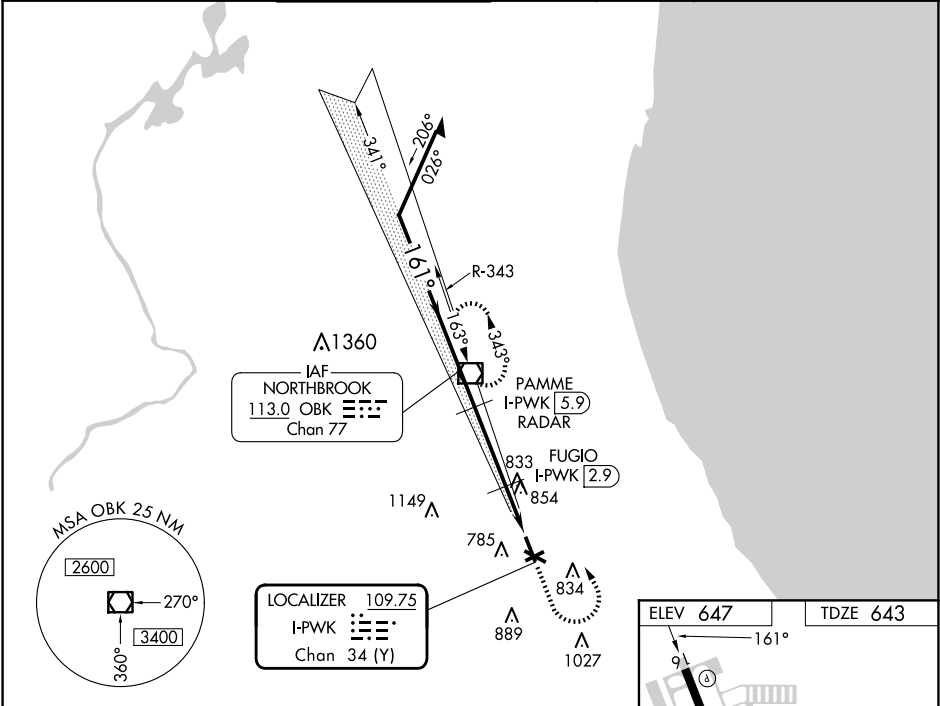
LOC/DME I-PWK	APP CRS	Rwy Idg	5001
109.75	161°	TDZE	643
Chan 34 (Y)		Apt Elev	647

ILS or LOC RWY 16

CHICAGO EXEC (PWK)

DME required.	MISSED APPROACH: Climb to 1400 then climbing left turn to 2700 direct OBK VOR/DME and hold, continue climb-in-hold to 2700.
Circling Rwy 6, 12, 24, 30 NA at night. Rwy 16 helicopter visibility reduction below ¾ SM NA.	

ATIS	CHICAGO APP CON	EXECUTIVE TOWER ★	GND CON	CLNC DEL	CLNC DEL	UNICOM
124.2	120.55 306.925	119.9 (CTAF) 0	121.7	124.7	124.7 (When twr closed)	122.95



CATEGORY	A	B	C	D	HIRL Rwy 6-24 and 16-34 0 MIRL Rwy 12-30 0 REIL Rwys 12 and 30 REIL Rwys 16 and 34 0 RLS Rwy 16 0 FAF to MAP 5 NM Knots 60 90 120 150 180 Min:Sec 5:00 3:20 2:30 2:00 1:40
S-ILS 16		927-7/8	284 (300-7/8)		
S-LOC 16		1020-1	377 (400-1)		
CIRCLING	1140-1 493 (500-1)	1160-1 513 (600-1)	1200-1½ 553 (600-2)	1460-2¾ 813 (900-2¾)	