

WAAS CH 70628 W06A	APP CRS 057°	Rwy Idg 5184 TDZE 874 Apt Elev 876
--	------------------------	---

RNAV (GPS) RWY 6

CUYAHOGA COUNTY (CGF)

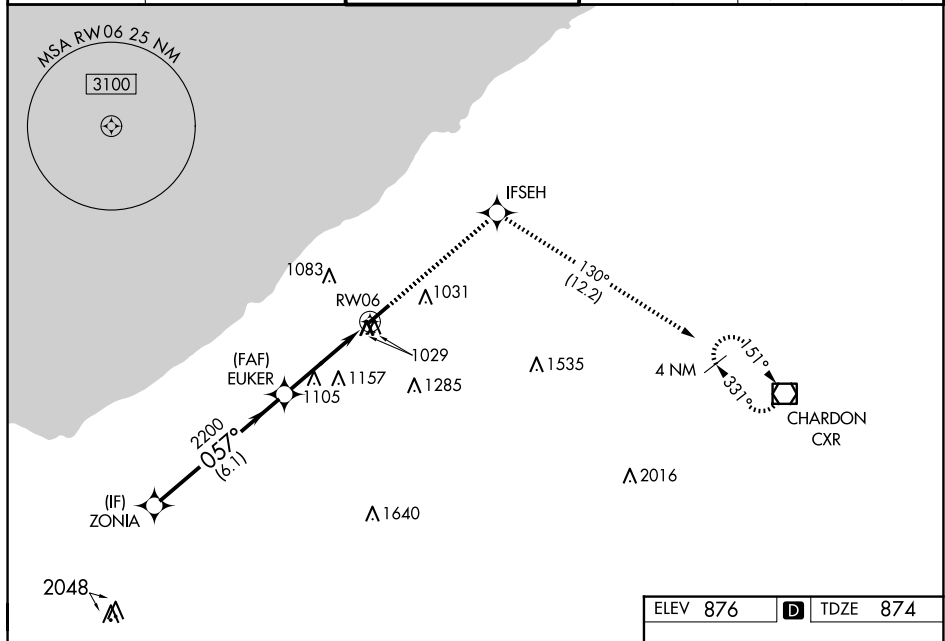
RNP APCH.



Rwy 6 helicopter visibility reduction below $\frac{3}{4}$ SM NA.
For uncompensated Baro-VNAV systems, LNAV/VNAV NA
below -16°C or above 38°C.

MISSED APPROACH:
Climb to 3100 direct IFSEH
and on track 130° to CXR
VOR/DME and hold.

D-ATIS 119.95	CLEVELAND APP CON 125.35 346.325	COUNTY TOWER★ 118.5 (CTAF) 0	GND CON 121.85	CLNC DEL 121.85 (when tower closed)
-------------------------	--	--	--------------------------	--



ELEV 876	D	TDZE 874
----------	----------	----------

