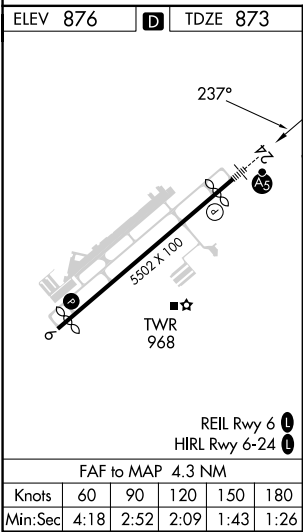
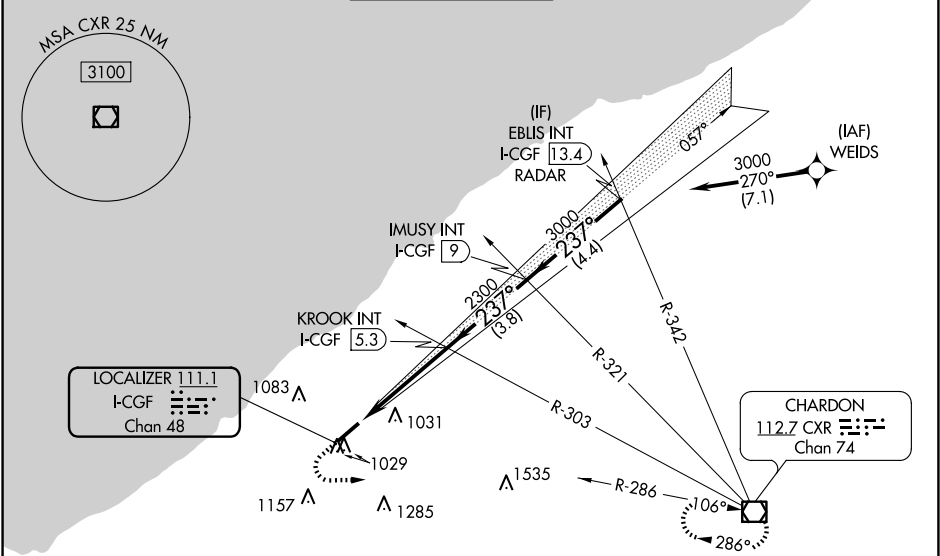


LOC/DME I-CGF 111.1 Chan 48	APP CRS 237°	Rwy Idg TDZE Apt Elev	5000 873 876
---	------------------------	-----------------------------	---

ILS or LOC RWY 24
CUYAHOGA COUNTY (CGF)

RNP APCH-GPS. From WEIDS. RNAV 1-GPS or RADAR required for procedure entry. Aircraft not GPS equipped - RADAR required for procedure entry.	MALSR 	MISSED APPROACH: Climb to 1600 then climbing left turn to 3100 on CXR VOR/DME R-286 to CXR VOR/DME and hold.
Autopilot coupled approach NA below 1513. Rwy 24 helicopter visibility reduction below 3/4 SM NA. For inop ALS increase S-LOC Cats C/D to 1 SM.		

D-ATIS 119.95	CLEVELAND APP CON 125.35 346.325	COUNTY TOWER★ 118.5 (CTAF)	GND CON 121.85	CINC DEL 121.85 (when tower closed)
-------------------------	--	--------------------------------------	--------------------------	--



ELEV 876		TDZE 873
1600	3100	CXR R-286
KROOK INT I-CGF 5.3		
IMUSY INT I-CGF 9		
EBLIS INT I-CGF 13.4 RADAR		
GS 3.00° TCH 44		
CATEGORY	A	B
S-ILS 24	1073-1/2	200 (200-1/2)
S-LOC 24	1240-1/2	367 (400-1/2)
CIRCLING	1400-1 524 (600-1)	1500-1 624 (700-1)
	1560-2 684 (700-2)	1620-2 1/2 744 (800-2 1/2)

EC-2, 10 JUL 2025 to 07 AUG 2025

EC-2, 10 JUL 2025 to 07 AUG 2025