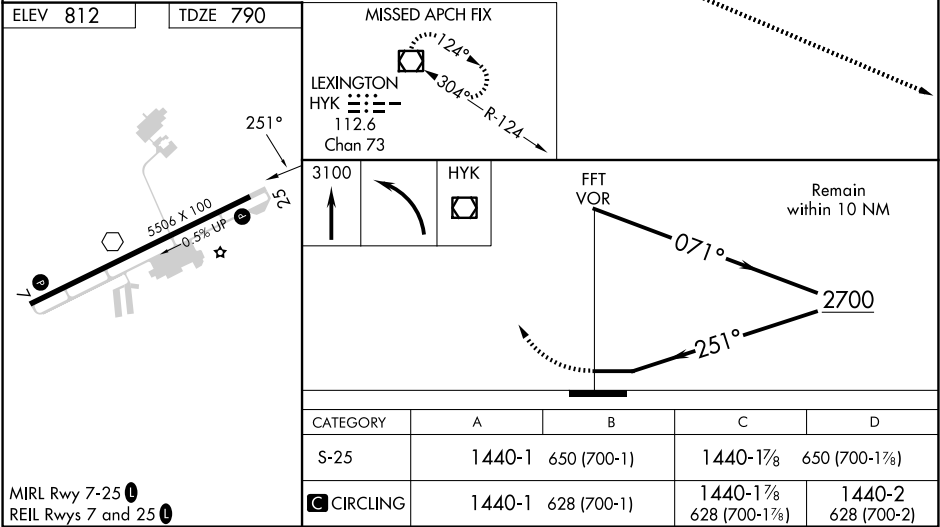
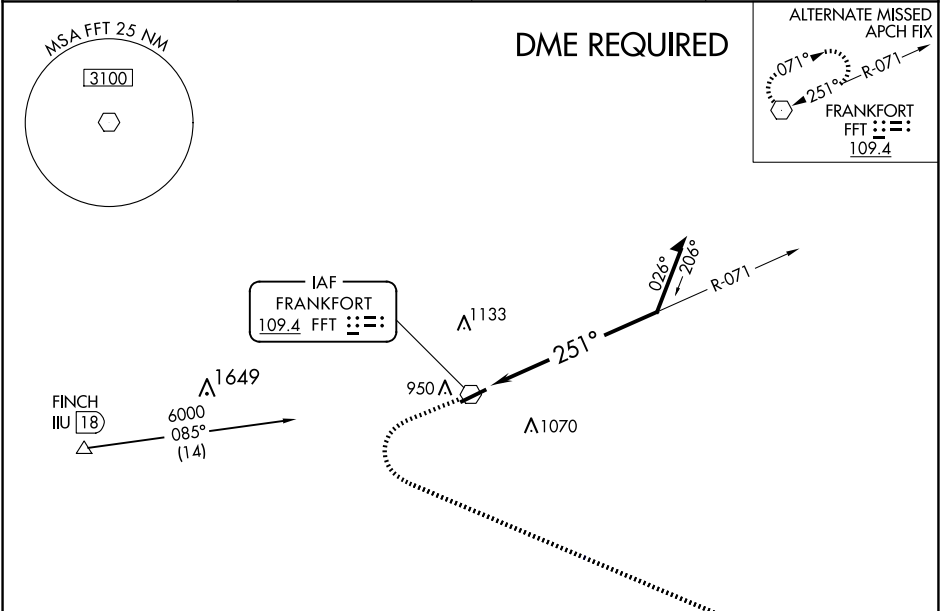


VOR FFT	APP CRS	Rwy Idg	5506
109.4	251°	TDZE	790
		Apt Elev	812

VOR RWY 25
CAPITAL CITY (F'TT)

<p>▼</p> <p>Rwy 25 helicopter visibility reduction below ¾ SM NA. When local altimeter setting not received, use Lexington altimeter setting and increase all MDA 80 feet, increase S-25 Cat C/D visibility ½ mile, and increase Circling Cat C ½ mile, and Cat D ¼ mile.</p>	<p>MISSED APPROACH: Climb to 3100 then left turn direct HYK VOR/DME and hold.</p>
--	--

ASOS 119.275	LEXINGTON APP CON 120.75 298.9	CLNC DEL 118.65	UNICOM 122.8 (CTAF) 0
-----------------	-----------------------------------	--------------------	--------------------------



MIRL Rwy 7-25
REIL Rws 7 and 25

SE-1, 10 JUL 2025 to 07 AUG 2025

SE-1, 10 JUL 2025 to 07 AUG 2025