

WAAS  
CH **50339**  
**W03A**

APP CRS  
**051°**

Rwy Idg  
TDZE **164**  
Apt Elev **170**

**RNAV (GPS) Y RWY 3**

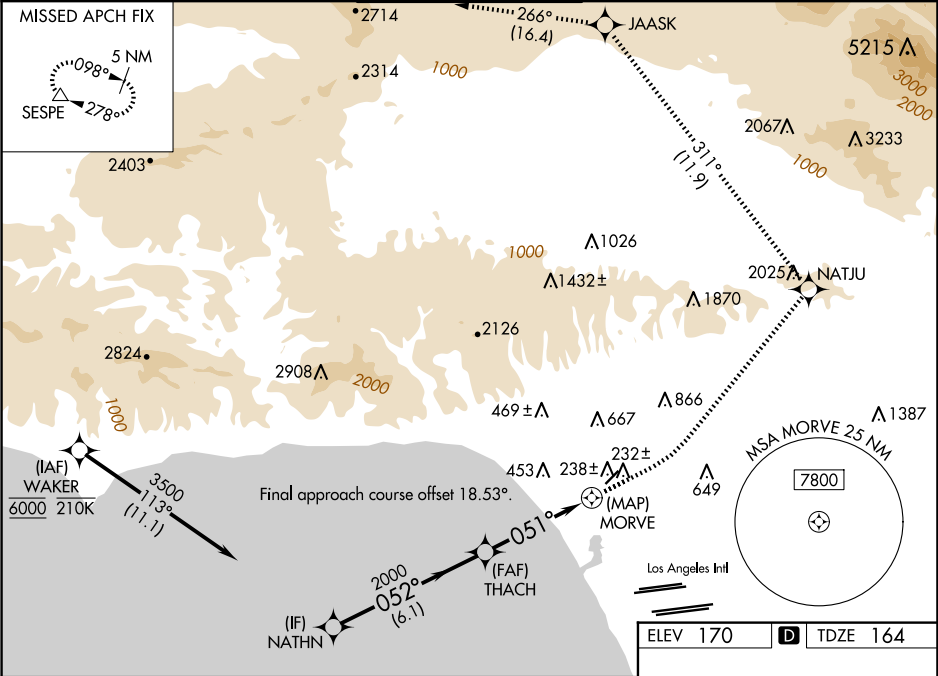
SANTA MONICA MUNI (SMO)

RNP APCH - GPS.

Rwy 3 helicopter visibility reduction below ¾ SM NA.

MISSED APPROACH: Climb to 600 then climbing left turn to 5500 direct NATJU and track 311° to JAASK and track 266° to SESPE and hold.  
\*Missed approach requires minimum climb of 280 feet per NM to 2300.

ATIS <b>119.15</b>	SOCAL APP CON <b>135.05 317.5</b>	SANTA MONICA TOWER ★ <b>120.1 (CTAF) 257.8</b>	GND CON <b>121.9</b>	UNICOM <b>122.95</b>
-----------------------	--------------------------------------	---	-------------------------	-------------------------



NATHN

THACH

MORVE

SESPE

600

5500

NATJU

JAASK

SESPE

3500

2000

052°

051°

3.46°

TCH 30

6.1 NM

4.3 NM

0.7

CATEGORY	A	B	C	D
LP MDA*	480-1 316 (400-1)			
LNAV MDA*	500-1 336 (400-1)			
LP MDA	820-1 656 (700-1)		820-17/8 656 (700-17/8)	
LNAV MDA	1000-1 836 (900-1)	1000-1¼ 836 (900-1¼)	1000-2½ 836 (900-2½)	

TWR 246

3500 Y 150 1:25 UP

051°

MIRL Rwy 3-21

REIL Rwy 21