

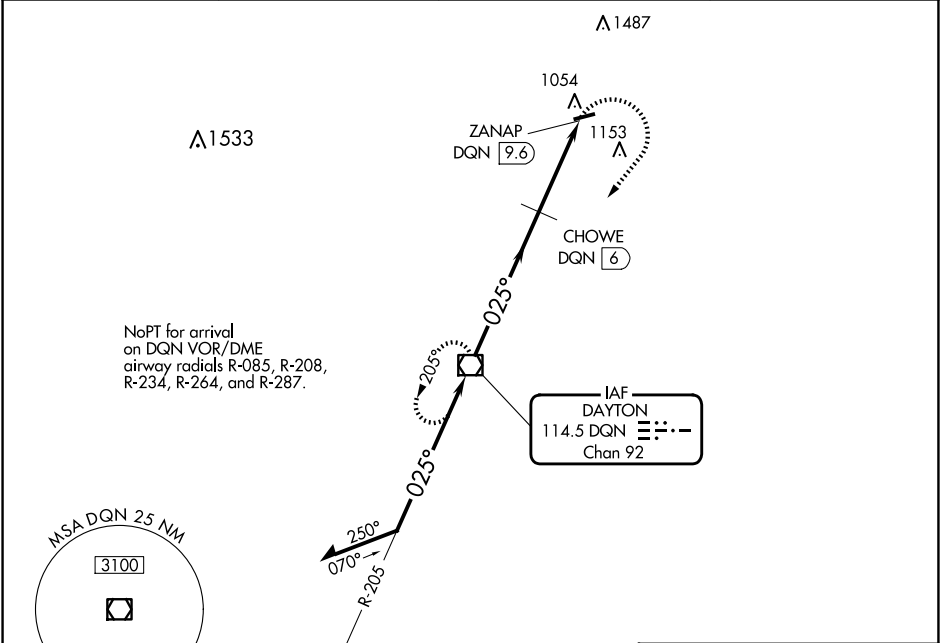
VOR/DME DQN	APP CRS	Rwy Idg TDZE	N/A
114.5	025°	Apt Elev	N/A
Chan 92			993

VOR-A

PIQUA/HARTZELL FLD (I17)

<div><div></div><div>NA</div></div>	Use James M Cox Dayton Intl altimeter setting.	MISSED APPROACH: Climbing right turn to 3000 direct DQN VOR/DME and hold.
-------------------------------------	------------------------------------------------	---------------------------------------------------------------------------

DAY ASOS	VES AWOS-3PT	COLUMBUS APP CON	UNICOM
125.8	125.9	134.45 294.5 352.05	123.0 (CTAF) 0



Remain within 10 NM

DQN VOR/DME

3000 205°

025° 3000

1680

6 NM 3.6 NM

CHOWE DQN 6

ZANAP DQN 9.6

CATEGORY	A	B	C	D
CIRCLING	1680-1 687 (700-1)		1680-2 687 (700-2)	1880-3 887 (900-3)

CHOWE FIX MINIMUMS (DME REQUIRED)

	1500-1 507 (600-1)	1560-1 567 (600-1)	1560-1½ 567 (600-1½)	1880-3 887 (900-3)
CIRCLING				

ELEV 993

3998 X 75

025°

MIRL Rwy 8-26

REIL Rws 8 and 26

FAF to MAP 9.6 NM

Knots	60	90	120	150	180
Min:Sec	9:36	6:24	4:48	3:50	3:12

EC-2, 10 JUL 2025 to 07 AUG 2025

EC-2, 10 JUL 2025 to 07 AUG 2025