

PIQUA, OHIO

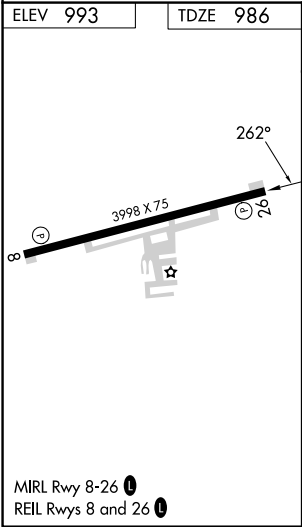
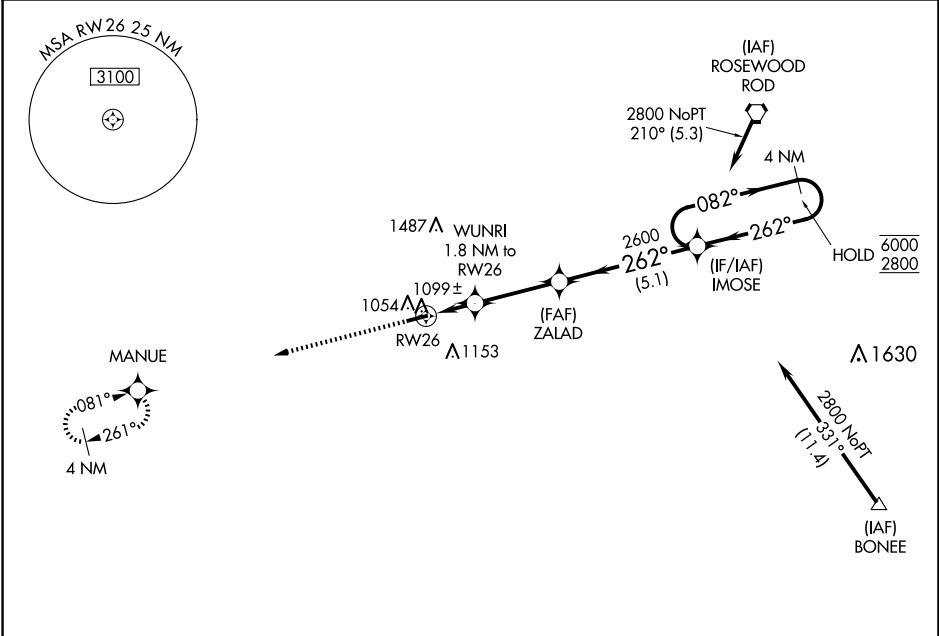
AL-5022 (FAA)

25051

WAAS CH <b>86745</b> <b>W26A</b>	APP CRS <b>262°</b>	Rwy Idg TDZE <b>986</b> Apt Elev <b>993</b>
--	------------------------	---

RNAV (GPS) RWY 26  
PIQUA/HARTZELL FLD (I17)

RNP APCH - GPS.		MISSED APPROACH: Climb to 2700 direct MANUE and hold.	
▼ ▲ NA Baro-VNAV NA. Use Versailles alimeter setting.			
DAY ASOS <b>125.8</b>	VES AWOS-3PT <b>125.9</b>	COLUMBUS APP CON <b>134.45 294.5 352.05</b>	UNICOM <b>123.0</b> (CTAF) <b>0</b>



ELEV 993 TDZE 986		2700 MANUE		IMOSE 4 NM Holding Pattern	
3998 X 75		WUNRI 1.8 NM to RWY 26		ZALAD 2600	
1600		1600		2600	
1.8 NM		3.1 NM		5.1 NM	
CATEGORY	A	B	C	D	
LPV DA	1213-1	227 (300-1)		NA	
LNAV/VNAV DA	1296-1	310 (400-1)		NA	
LNAV MDA	1380-1	394 (400-1)	1380-1½ 394 (400-1½)	NA	
CIRCLING	1440-1 447 (500-1)	1540-1 547 (600-1)	1560-1½ 567 (600-1½)	NA	

PIQUA, OHIO  
Amdt 1A 07SEP23

40°10'N-84°19'W

PIQUA/HARTZELL FLD (I17)  
RNAV (GPS) RWY 26