

WAAS CH 77617 W09A	APP CRS 090°	Rwy Idg 5998 TDZE 96 Apt Elev 112
--	------------------------	--

RNAV (GPS) RWY 9

ESLR RGNL (E5F7)

RNP APCH-GPS.

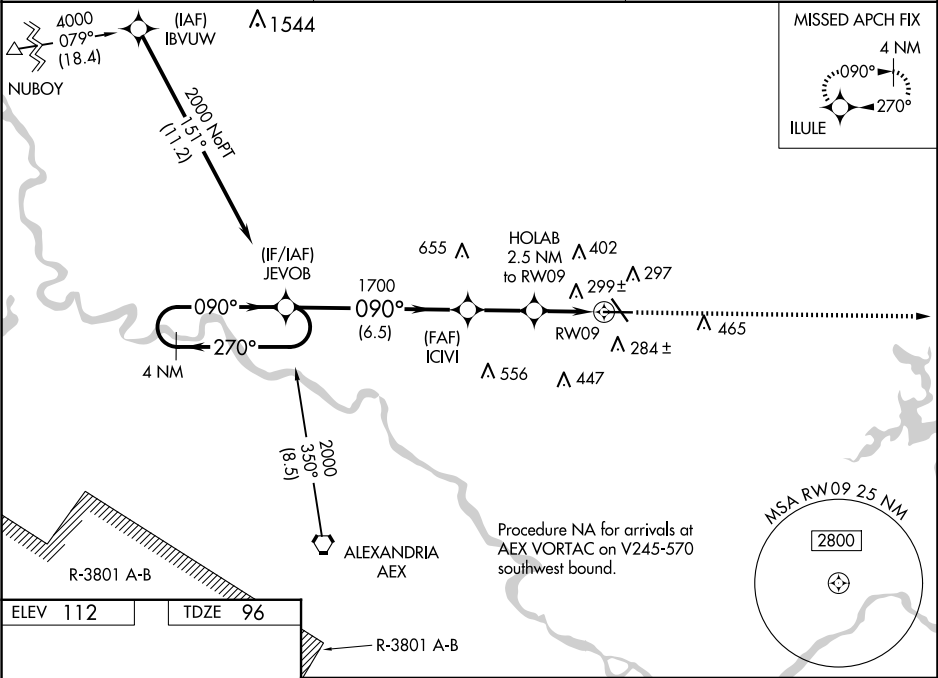
▼

▲

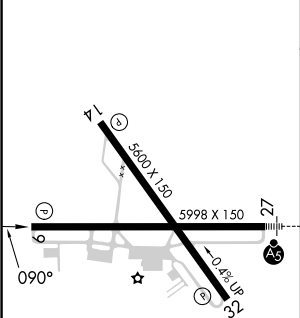
Circling Rwy 14, 32 NA at night. Baro-VNAV and VDP NA when using Alexandria Intl altimeter setting. For uncompensated Baro-VNAV systems, LNAV/VNAV NA below -6°C or above 54°C. When local altimeter setting not received, use Alexandria Intl altimeter setting: increase LPV DA to 331 feet; increase LNAV/VNAV DA to 644 feet and all visibility ¼ SM; increase all MDAs 40 feet and Circling visibility Cat D ¼.

MISSED APPROACH: Climb to 3000 direct ILULE and hold.

ESF ASOS 119.425	POLK APP CON 125.4 254.8	UNICOM 122.8 (CTAF) 0
----------------------------	------------------------------------	---------------------------------



ELEV 112	TDZE 96
-----------------	----------------



4 NM Holding Pattern		JEVOB		ICIVI		HOLAB 2.5 NM to RW09		*1.3 NM to RW09		RW09	
2000		270°		090°		1700		*940			
GP 3.00° TCH 53											
		6.5 NM		2.4 NM		1.2 NM		1.3 NM			
CATEGORY		A		B		C		D			
LPV DA		296-3¼				200 (200-¾)					
LNAV/ VNAV DA		609-1¾				513 (500-1¾)					
LNAV MDA		560-1		464 (500-1)		560-1¾		464 (500-1¾)			
CIRCLING		600-1		488 (500-1)		740-1¾ 628 (700-1¾)		760-2 648 (700-2)			