

WAAS CH <b>61103</b> <b>W27A</b>	APP CRS <b>270°</b>	Rwy Idg TDZE <b>92</b> Apt Elev <b>112</b>
--	------------------------	--

RNAV (GPS) RWY 27

ESLER RGNL (E/SF')

RNP APCH-GPS.

⚠

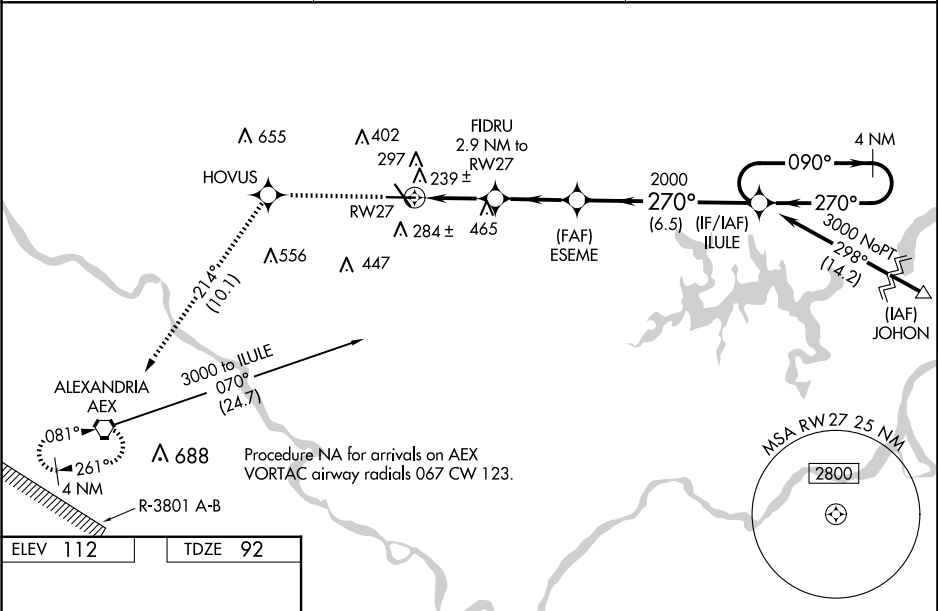
Circling Rwy 14, 32 NA at night. Baro-VNAV and VDP NA when using Alexandria Intl altimeter setting. For uncompensated Baro-VNAV systems, LNAV/VNAV NA below -6°C or above 54°C. When local altimeter setting not received, use Alexandria Intl altimeter setting: increase LPV DA to 327 feet; increase LNAV/VNAV DA to 457 feet and all visibility ⅓ SM; increase all MDAs 40 feet and LNAV visibility Cat C/D ⅓ SM and Circling visibility Cat D ¼ SM. For inop MALSR increase LNAV/VNAV all Cats visibility to 1 mile and LNAV Cat C/D visibility to 1⅓. For inop MALSR, when using Alexandria Intl altimeter setting, increase LNAV/VNAV all Cats visibility to 1 SM.

MALSR

MISSED APPROACH:

Climb to 3000 direct HOVUS and on track 214° to AEX VORTAC and hold.

ESF ASOS <b>119.425</b>	POLK APP CON <b>125.4 254.8</b>	UNICOM <b>122.8</b> (CTAF) <b>0</b>
----------------------------	------------------------------------	--



ELEV 112

TDZE 92

REIL Rws 9, 14 and 32 **0**

MIRL Rwy 14-32 **0**

HIRL Rwy 9-27 **0**

3000	HOVUS	tr 214°	AEX	ILULE	4 NM Holding Pattern
*LNAV only.		FIDRU 2.9 NM to RW27	ESEME 2000	ILULE	GP 3.00° TCH 59
RW27		*1.1 NM to RW27	1060*	2000	
		1.1 NM	1.8 NM	2.9 NM	6.5 NM
CATEGORY	A		B	C	D
LPV DA			292-½	200 (200-½)	
LNAV/VNAV DA			422-½	330 (400-½)	
LNAV MDA	500-½	408 (400-½)	500-¾		408 (400-¾)
CIRCLING	600-1	488 (500-1)	740-1¾		760-2
			628 (700-1¾)		648 (700-2)