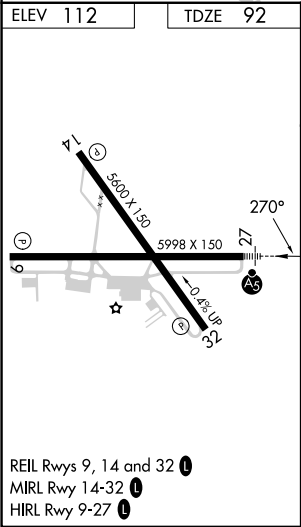
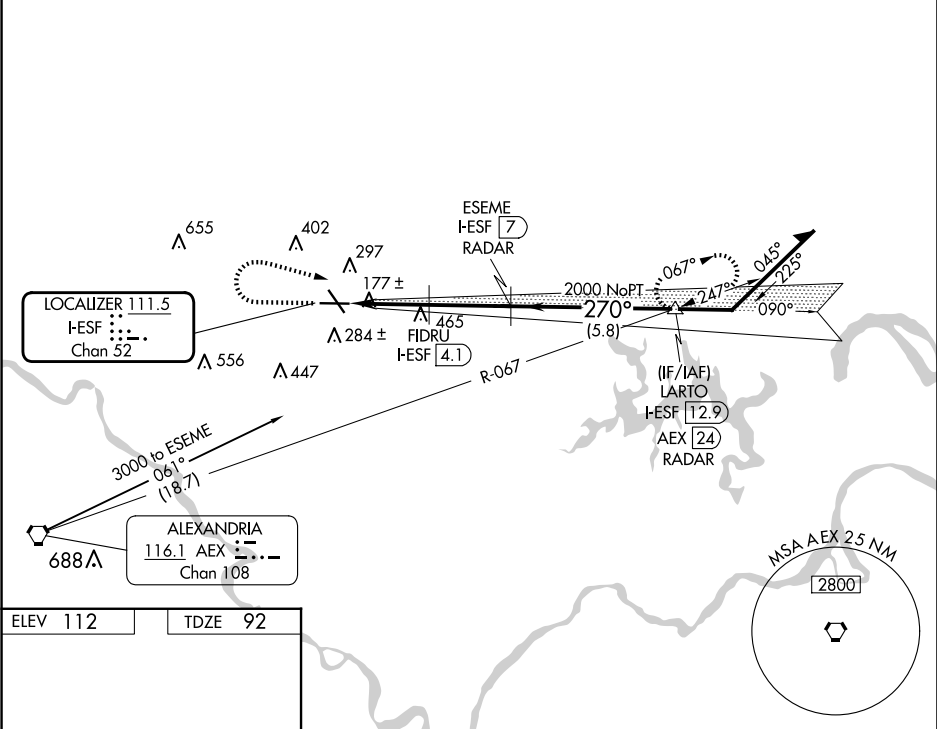


LOC I-ESF <b>111.5</b> Chan <b>52</b>	APP CRS <b>270°</b>	Rwy Idg <b>5998</b> TDZE <b>92</b> Apt Elev <b>112</b>
---	------------------------	--

ILS or LOC/DME RWY 27  
ESLR RGNL (E/SF')

RADAR or DME required.	MALSR	MISSED APPROACH: Climb to 1500 then climbing right turn to 3000 on heading 120° and on AEX VORTAC R-067 to LARTO/AEX 24.1 DME/RADAR and hold.
<p>⚠ Circling Rwy 14, 32 NA at night. VDP NA with Alexandria Intl altimeter setting. When local altimeter not received, use Alexandria Intl altimeter setting and increase DA to 327 feet; increase all MDA to 40 feet and Circling visibility Cat D ¼ SM. For inop MALSR, increase S-LOC 27 Cat C/D visibility to 1 SM.</p>		

ESF ASOS <b>119.425</b>	POLK APP CON <b>125.4 254.8</b>	UNICOM <b>122.8 (CTAF) 0</b>
----------------------------	------------------------------------	---------------------------------



1500	3000	AEX R-067	LARTO AEX 24.1 RADAR	ESEME I-ESF 7 RADAR	Remain within 10 NM
*LOC only.					
<p>2000 090° 2500 270° 2000</p> <p>GS 3.00° TCH 59</p> <p>0.9 2 NM 2.9 NM</p>					
CATEGORY	A	B	C	D	
S-ILS 27	292-½ 200 (200-½)				
S-LOC 27	440-½ 348 (400-½)		440-⅝ 348 (400-⅝)		
CIRCLING	600-1 488 (500-1)		740-1¾ 628 (700-1¾)		760-2 648 (700-2)

SC-4, 10 JUL 2025 to 07 AUG 2025

SC-4, 10 JUL 2025 to 07 AUG 2025