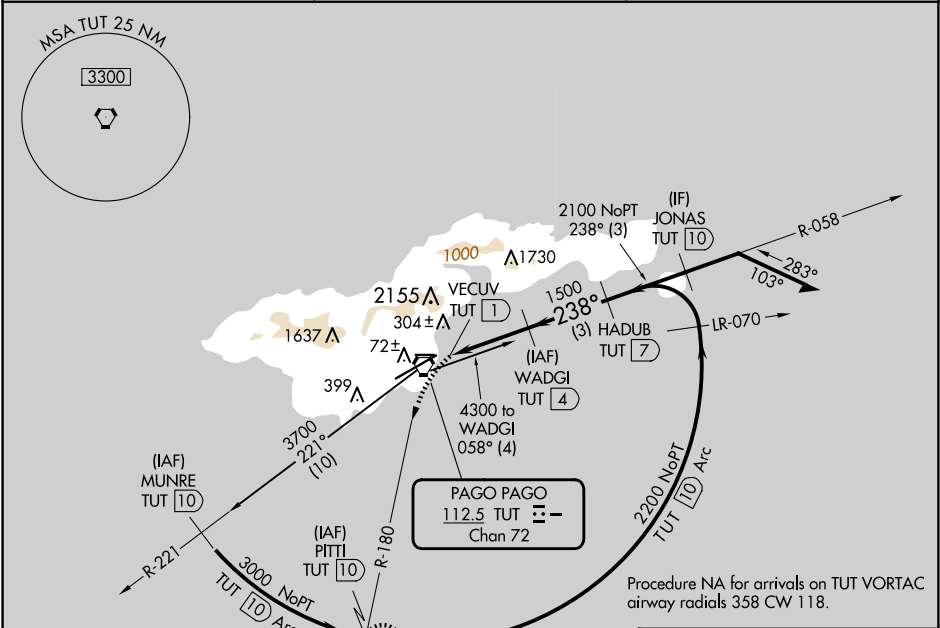


VORTAC TUT 112.5 Chan 72	APP CRS 238°	Rwy Ldg TDZE Apt Elev	N/A N/A 31
----------------------------------------------	------------------------	-----------------------------	---------------------------------------

VOR or TACAN-B
PAGO PAGO INTL (PPG) (NSTU)

DME required.	MISSED APPROACH: Climbing left turn to 3000 on TUT VORTAC R-180 to PITTI/10 DME and hold, continue climb-in-hold to 3000.
<div><div></div><div></div></div> <div>Circling NA northwest of Rwy 5-23.</div>	

FALEOLO APP CON 118.1 6.553 (HF)	CTAF 122.9	118.30
--------------------------------------------	----------------------	---------------



ELEV 31 D				
<p>Diagram of the approach procedure showing altitudes and distances. Key features include:</p> <ul style="list-style-type: none">Altitudes: 3000, 2800, 2200, 2100, 1500, 1000.Distances: 3 NM, 3 NM, 3 NM.Navigation aids: (IAF) PITTI TUT 10, (IAF) WADGI TUT 4, (IF) JONAS TUT 10, HADUB TUT 7, VECUV TUT 1.				
CATEGORY	A	B	C	D
C CIRCLING	560-1 529 (600-1)	700-1 669 (700-1)	820-2¼ 789 (800-2¼)	860-2¾ 829 (900-2¾)