

APP CRS	Rwy Ldg	8200
047°	TDZE	32
	Apt Elev	32

RNAV (GPS) RWY 5

PAGO PAGO INTL (PPG) (NSTU)

RNP APCH.

▼

▲

For uncompensated Baro-VNAV systems, LNAV/VNAV NA below 22°C or above 54°C. When local altimeter setting not received, procedure NA. Circling NA northwest of Rwy 5-23. Rwy 5 helicopter visibility reduction below ¾ SM NA. Inop table does not apply to LNAV Cats A/B. For inop ALS, increase LNAV/VNAV all Cats visibility to 1¾ SM and LNAV Cats C/D visibility to 2 SM.

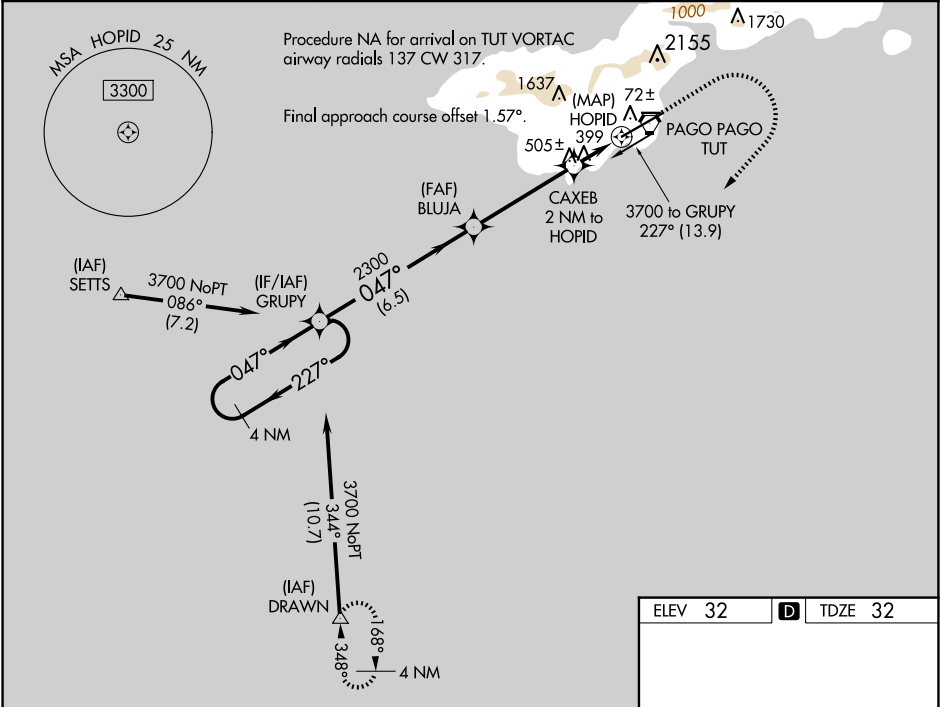
MALSRL

AS

⏏

MISSED APPROACH:
(Maintain 185 K max until 760) Climb to 760 then climbing right turn to 4000 direct DRAWN and hold.

FALEOLO APP CON	CTAF	118.30
118.1 6.553 (HF)	122.9	



4 NM Holding Pattern		VGSI and RNAV glidepath not coincident (VGSI Angle 3.25/TCH 57).		760	4000	DRAWN
3700		227°		2300		
GP 3.25° TCH 51		047°		*840		
6.5 NM		4.2 NM		2 NM		
CATEGORY	A	B	C	D		
LNAV/VNAV DA	551-1		519 (600-1)			
LNAV MDA	760-1	728 (800-1)	760-1½	728 (800-1½)		
CIRCLING	760-1	728 (800-1)	820-2¼ 788 (800-2¼)	860-2¾ 828 (900-2¾)		

ELEV 32

TDZE 32

3801 X 100

10001 X 150

0.4% DOWN

047°