

APP CRS 282°	Rwy Idg 4255 TDZE 46 Apt Elev 55
------------------------	---

RNAV (GPS) Z RWY 28

EAST HAMPTON TOWN (JPX)

RNP APCH - GPS.

- T** Procedure NA at night. Rwy 28 helicopter visibility reduction below 1 SM NA. When local altimeter setting not received, use Westhampton Beach altimeter setting and increase all MDAs 60 feet and visibility Cat C $\frac{1}{4}$ SM.

MISSED APPROACH: Climb to 2000 direct MATHW and hold.

AWOS-3PT 118.075	NEW YORK APP CON 125.975 343.65	EAST HAMPTON TOWER ★ 125.225 (CTAF) 0	GND CON 121.9	CLNC DEL 118.95
---------------------	------------------------------------	--	------------------	--------------------

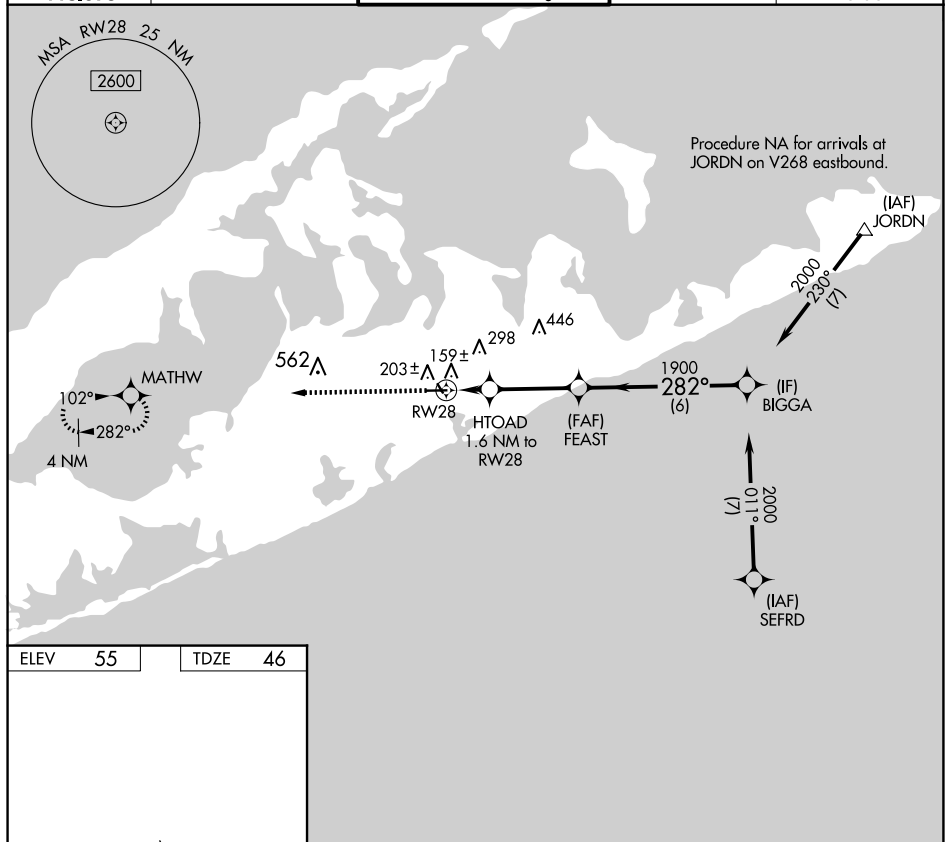


Diagram illustrating the MIRA 10-28 approach procedure. The diagram shows the runway (RW28) and the approach path. Key points include the TWR (Tower), MATHW (MIRA), and BIGGA (Bigga). The approach is categorized as A, B, C, and D. The MIRA 10-28 approach is a non-precision approach with a minimum descent altitude (MDA) of 420-1.

CATEGORY	A	B	C	D
LNAV MDA	420-1	374 (400-1)		NA

EAST HAMPTON, NEW YORK
Orig-A 01DEC22

40°58'N-72°15'W

EAST HAMPTON TOWN (JPX)
RNAV (GPS) Z RWY 28

NE-2, 10 JUL 2025 to 07 AUG 2025