

WAAS CH 58315 W23A	APP CRS 233°	Rwy Idg 7000 TDZE 612 Apt Elev 612
--	------------------------	---

RNAV (GPS) RWY 23

ANNISTON RGNL (ANB)

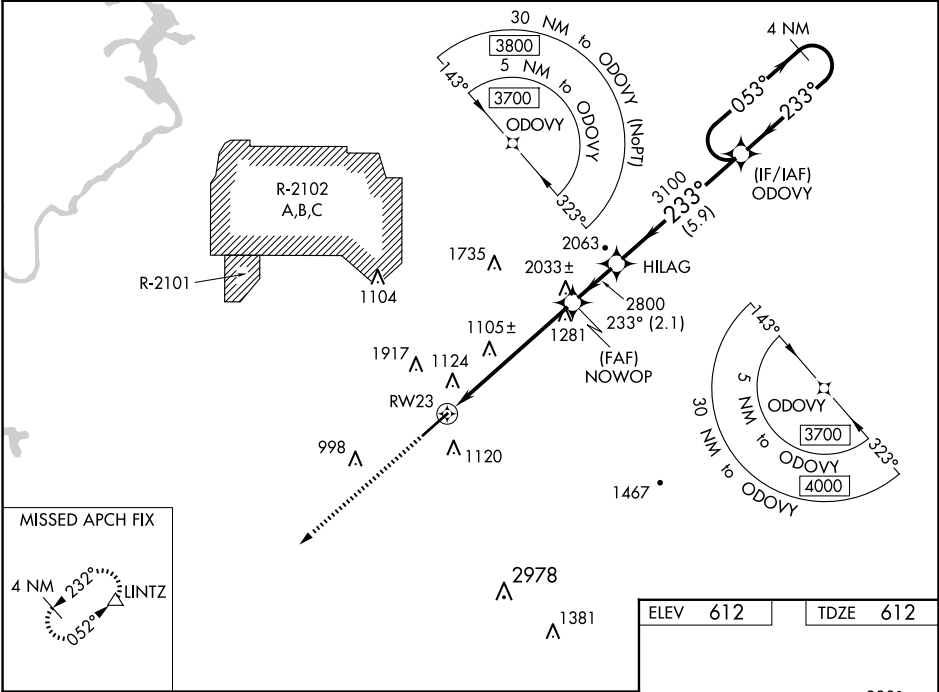
⚠

⚠

For uncompensated Baro-VNAV systems, LNAV/VNAV NA below -8°C (18°F) or above 54°C (130°F). Circling NA north of Rwy 5-23. Rwy 23 helicopter visibility reduction below ¾ NA. DME/DME RNP-0.3 NA. When local altimeter setting not received, use Gadsden altimeter setting: increase all DA 66 feet and all visibilities ½ SM; increase all MDAs 80 feet and Circling Cat A and C visibilities ¼ SM. Baro-VNAV and VDP NA when using Gadsden altimeter setting.

MISSED APPROACH:
Climb to 3400 direct LINTZ and hold.

ASOS 119.675	BIRMINGHAM APP CON 132.15 285.45	CTAF 123.6 0	UNICOM 123.0
------------------------	--	------------------------	------------------------



3400	LINTZ	VGSI and RNAV glidepath not coincident (VGSI Angle 3.00/TCH 39).	4 NM Holding Pattern
*LNAV only.	*2.3 NM to RW23	NOWOP	HILAG
RW23	2800	2800	3100
2.3	3.7 NM	2.1 NM	5.9 NM
CATEGORY	A	B	C
LPV DA	952-1	340 (400-1)	NA
LNAV/VNAV DA	1274-2	662 (700-2)	NA
LNAV MDA	1380-1 768 (800-1)	1380-1¼ 768 (800-1¼)	1380-2½ 768 (800-2½)
CIRCLING	1420-1 808 (900-1)	1420-1¼ 808 (900-1¼)	1420-2½ 808 (900-2½)

