

MINOT, NORTH DAKOTA

RNAV (GPS) Y RWY 30

WAAS CH 47084 W30B	APCH CRS 298°	Rwy ldg TDZE Arprt Elev	13,198 1646 1666
--------------------------	------------------	-------------------------------	------------------------

- (USAF)

MINOT AFB (KMIB)

RNP APCH - GPS

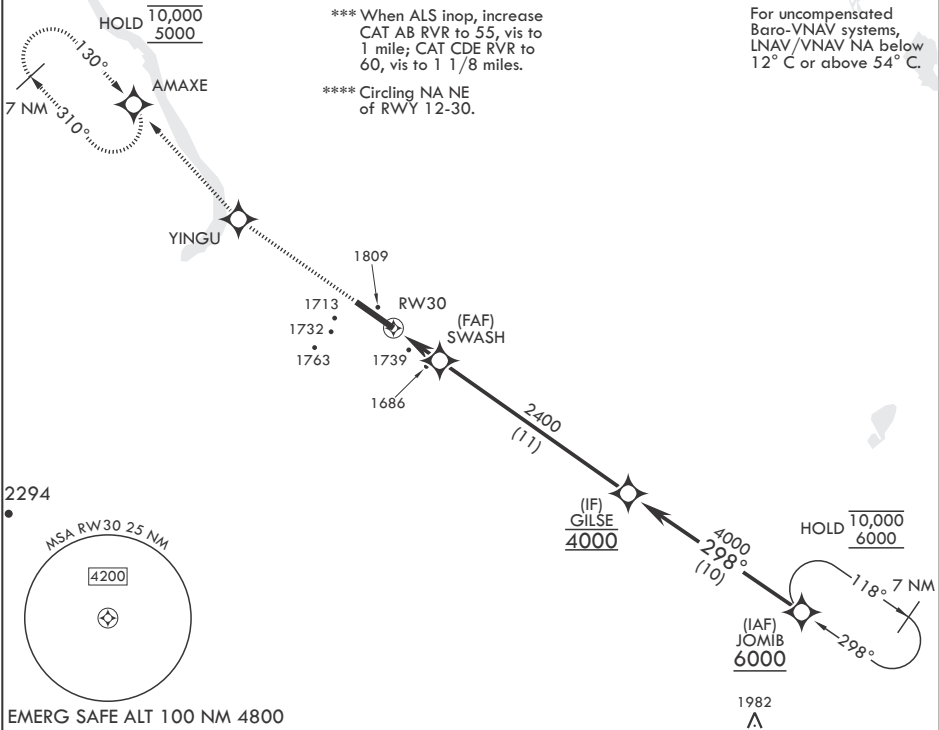
- * When ALS inop, increase RVR to 40, vis to 3/4 mile.
- ** When ALS inop, increase RVR to 60, vis to 1 1/8 miles.

ALSF-1

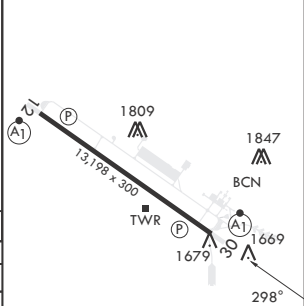
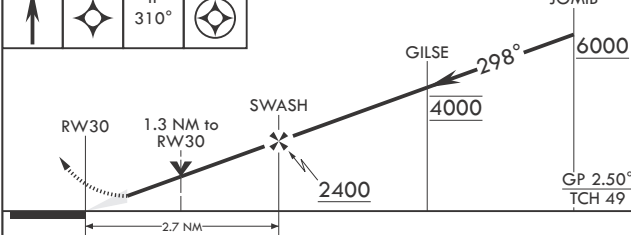


MISSED APPROACH: Climb to 5000 direct YINGU, track 310° to AMAXE and hold.

ATIS★ 278.8	APP CON 119.6 363.8	TOWER★ 120.65 253.5	GND CON 134.0 275.8	CLNC DEL 326.2
----------------	------------------------	------------------------	------------------------	-------------------



5000	YINGU	tr 310°	AMAXE	JOMIB	ELEV 1666	TDZE 1646
------	-------	------------	-------	-------	-----------	-----------



CATEGORY	A	B	C	D	E
LPV DA*	1846/24	200	(200-1/2)		
LNAV/VNAV DA**	2027/35	381	(400-5/8)		
LNAV MDA***	2040/24 394 (400-1/2)	2040/40 394 (400-3/4)			
CIRCLING****	2120-1 454 (500-1)	2140-1 474 (500-1)	2180-1 514 (600-1 1/2)	2320-2 654 (700-2)	2320-2 654 (700-2 1/4)

HIRL all Rwys

MINOT, NORTH DAKOTA

48°25'N - 101°21'W

MINOT AFB (KMIB)

Orig 15JUN23

RNAV (GPS) Y RWY 30

NC-1, 10 JUL 2025 to 07 AUG 2025

NC-1, 10 JUL 2025 to 07 AUG 2025