

MINOT, NORTH DAKOTA

RNAV (GPS) Y RWY 12

WAAS CH 51051 W12B	APCH CRS 118°	Rwy Idg 13,198 THRE 1666 Arpt Elev 1666
--------------------------	------------------	---

- (USAF)

MINOT AFB (KMIB)

RNP APCH-GPS

* When ALS inop, increase RVR to 40, vis to 3/4 mile.
** When ALS inop, increase RVR to 60, vis to 1 1/8 miles.

ALSF-1

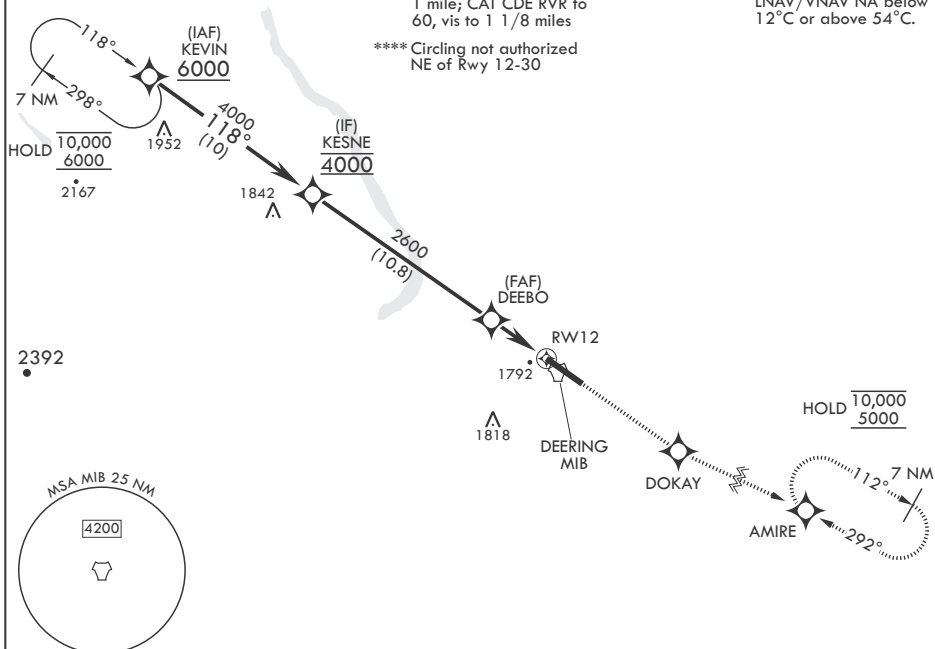
MISSED APPROACH: Climb to 5000 direct DOKAY, track 108° to AMIRE and hold.

ATIS★ 278.8	APP CON 119.6 363.8	TOWER★ 120.65 253.5	GND CON 134.0 275.8	CLNC DEL 326.2
----------------	------------------------	------------------------	------------------------	-------------------

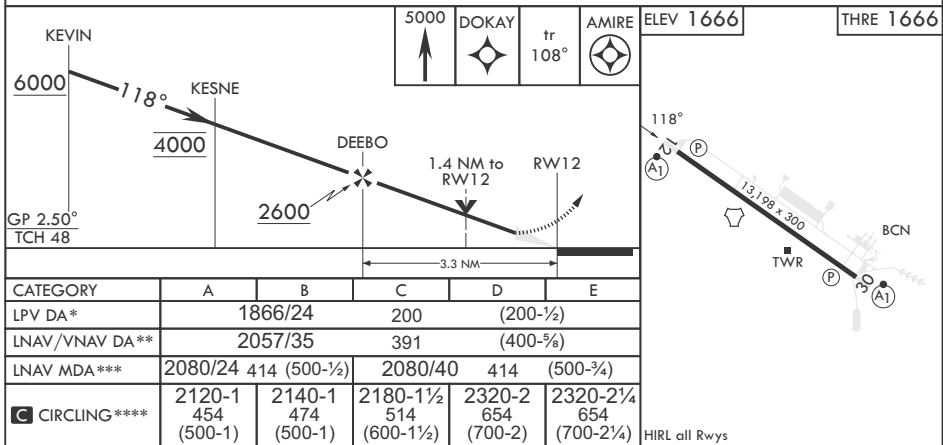
*** When ALS inop, increase CAT AB RVR to 55, vis to 1 mile; CAT CDE RVR to 60, vis to 1 1/8 miles

**** Circling not authorized
NE of Rwy 12-30

For uncompensated
Baro-VNAV systems,
LNAV/VNAV NA below
12°C or above 54°C.



EMERG SAFE ALT 100 NM 4800



MINOT, NORTH DAKOTA

48°25'N - 101°21'W

MINOT AFB (KMIB)

RNAV (GPS) Y RWY 12

Orig 15JUN23

NC-1, 10 JUL 2025 to 07 AUG 2025

NC-1, 10 JUL 2025 to 07 AUG 2025