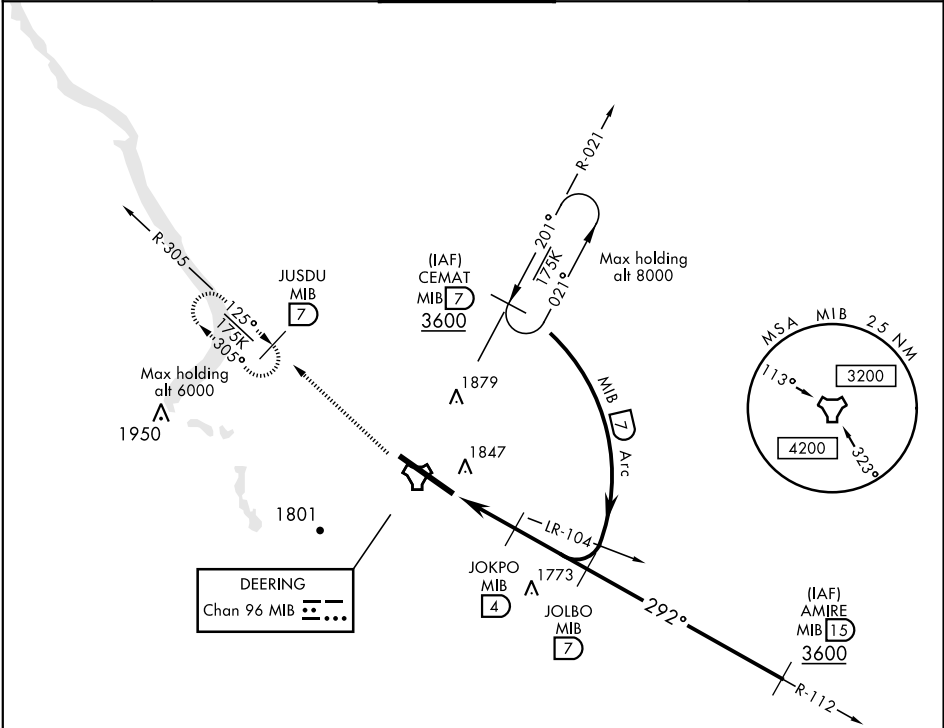


| | | | | |
|--|-------------------------------------|---|-------------------------------|---|
| TACAN MIB Chan 96 | APCH CRS 292° | Rwy ldg 13,198 TDZE 1646 Arprt Elev 1666 | AL-5013 [USAF] | MINOT AFB (KMIB) |
| * When ALS inop, increase RVR to 28 and vis to ½ mile. | | | ALSF-1 | MISSED APPROACH: Climb to 3600 via MIB TACAN R-305 direct JUSDU and hold. |
| ATIS ★ 278.8 | MINOT APP CON 119.6 363.8 | MINOT TOWER ★ 120.65 253.5 | GND CON 134.0 275.8 | CLNC DEL 326.2 |



NC-1, 10 JUL 2025 to 07 AUG 2025

NC-1, 10 JUL 2025 to 07 AUG 2025

COPTER ONLY
EMERG SAFE ALT 100 NM 4700

