

MINOT, NORTH DAKOTA

COPTER RNAV (GPS) RWY 12

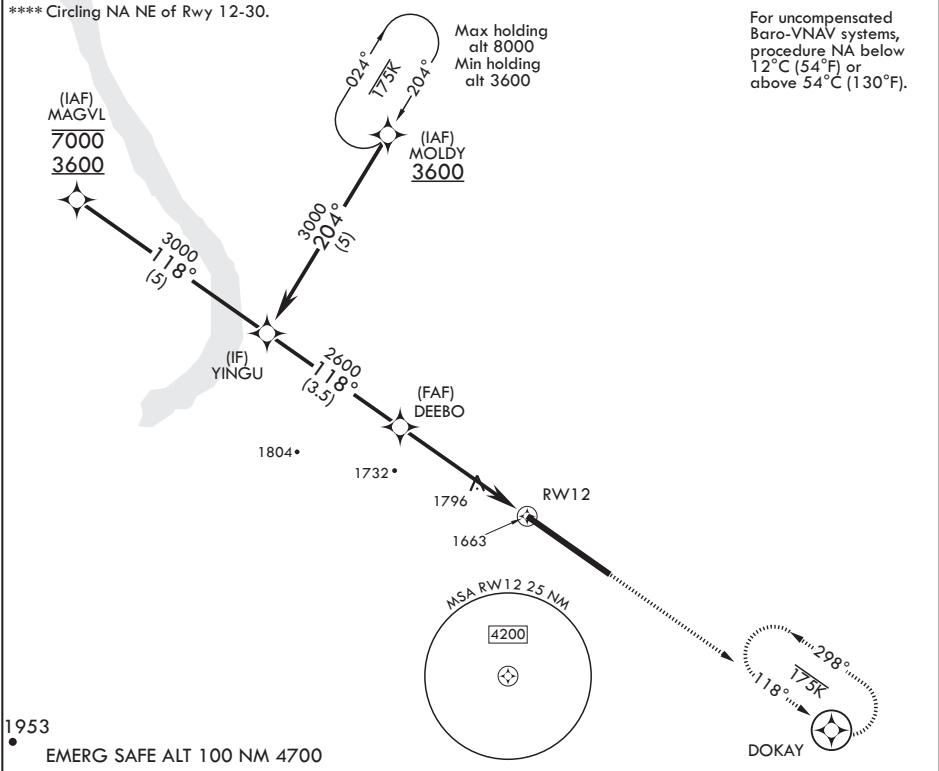
WAAS CH 71280 W12A	APCH CRS 118°	Rwy ldg TDZE Arpt Elev	13,198 1666 1666
--------------------------	------------------	------------------------------	------------------------

AL-5013 (USAF)

MINOT AFB (KMIB)

* When ALS inop, increase CAT A RVR to 40, vis to 3/4 mile. ** When ALS inop, increase CAT A vis to 1 5/8 miles. *** When ALS inop, increase CAT A RVR to 55, vis to 1 mile.		ALSF-1 	MISSED APPROACH: Climb to 3600 direct DOKAY and hold.
--	--	------------	---

ATIS ★ 278.8	APP CON 119.6 363.8	TOWER ★ 120.65 253.5	GND CON 134.0 275.8	CLNC DEL 326.2
-----------------	------------------------	-------------------------	------------------------	-------------------



YINGU		↑ LNAV only	3600	DOKAY	ELEV 1666	TDZE 1666
3000		118°	DEEBO	2600	GP 2.50° TCH 48	
			↑ 1.5 NM to RWY 12	RWY 12		
			3.3 NM			
CATEGORY	COPTER					
LPV DA*	1866/24	200	(200-1/4)			
LNAV/VNAV DA**	2077/60	411	(500-11/2)			
LNAV MDA***	2100/24	434	(500-11/2)			
C CIRCLING****	2120-1	454	(500-1)			
HIRL all Rws						

MINOT, NORTH DAKOTA

48°25'N - 101°21'W

MINOT AFB (KMIB)

Orig 19JUL18

COPTER RNAV (GPS) RWY 12

NC-1, 10 JUL 2025 to 07 AUG 2025

NC-1, 10 JUL 2025 to 07 AUG 2025