

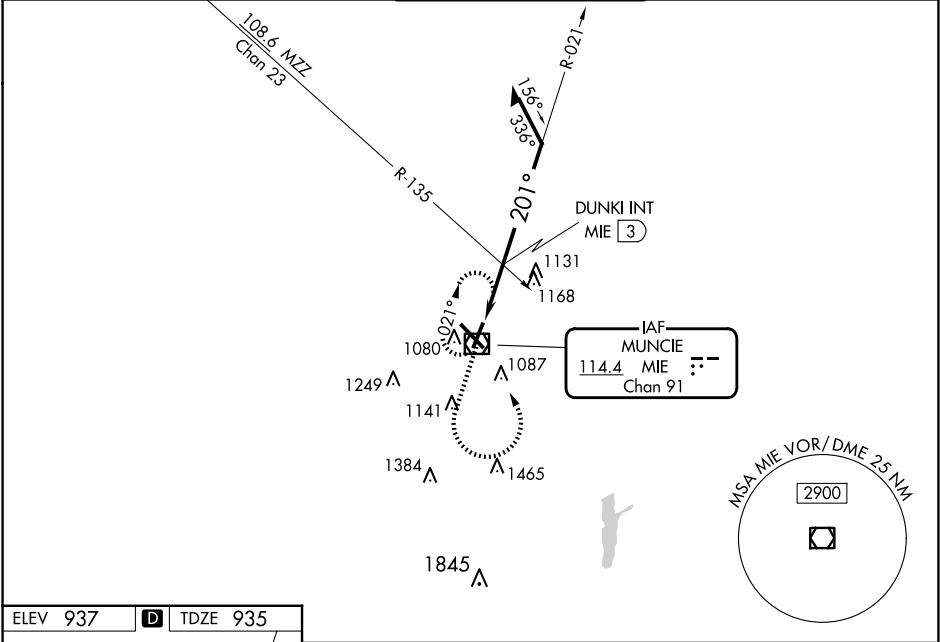
VOR/DME MIE	APP CRS	Rwy Ldg
114.4	201°	5197
Chan 91		TDZE 935
		Apt Elev 937

VOR RWY 21
DELAWARE COUNTY RGNL (MIE)

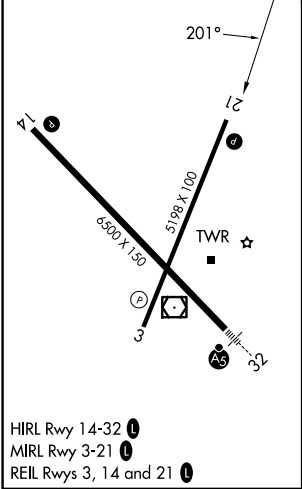
▼ Visibility reduction by helicopters NA. When local altimeter setting not received, use Fort Wayne Intl altimeter setting and increase all MDAs 140 feet; increase S-21 Cat C visibility ½ SM and Cat D visibility ¼ SM; increase Circling Cat C visibility ½ SM and Cat D ¼ SM; DUNKI fix minimums: increase S-21 Cat C/D ¾ SM and Circling visibility Cat C/D ½ SM. VDP NA when using Fort Wayne Intl altimeter setting.

⚠ MISSED APPROACH: Climb to 2200 then climbing left turn to 2600 direct MIE VOR/DME and hold.

ATIS 133.25	INDIANAPOLIS APP CON 120.65 317.8	MUNCIE TOWER★ 120.1 (CTAF) 0	GND CON 121.9	UNICOM 122.95
----------------	--------------------------------------	---------------------------------	------------------	------------------



ELEV 937	D	TDZE 935
----------	---	----------



2200	2600	MIE	<div><div>MIE VOR/DME 2600</div><div>Remain within 10 NM</div><div>021°</div><div>MIE 2.2</div><div>DUNKI INT MIE 3</div><div>201°</div><div>2500</div><div>1500*</div><div>0.7 1.5 NM 0.8 NM</div></div>			
*1640 when using Fort Wayne Intl altimeter setting.						
CATEGORY	A	B	C	D		
S-21	1500-1	565 (600-1)	1500-1½ 565 (600-1½)	1500-1¾ 565 (600-1¾)		
CIRCLING	1500-1	563 (600-1)	1500-1½ 563 (600-1½)	1560-2 623 (700-2)		
DUNKI FIX MINIMUMS (DUAL VOR RECEIVERS OR DME REQUIRED)						
S-21	1440-1	505 (600-1)	1440-1½	505 (600-1½)		
CIRCLING	1460-1	523 (600-1)	1480-1½ 543 (600-1½)	1560-2 623 (700-2)		

EC-2, 10 JUL 2025 to 07 AUG 2025

EC-2, 10 JUL 2025 to 07 AUG 2025