

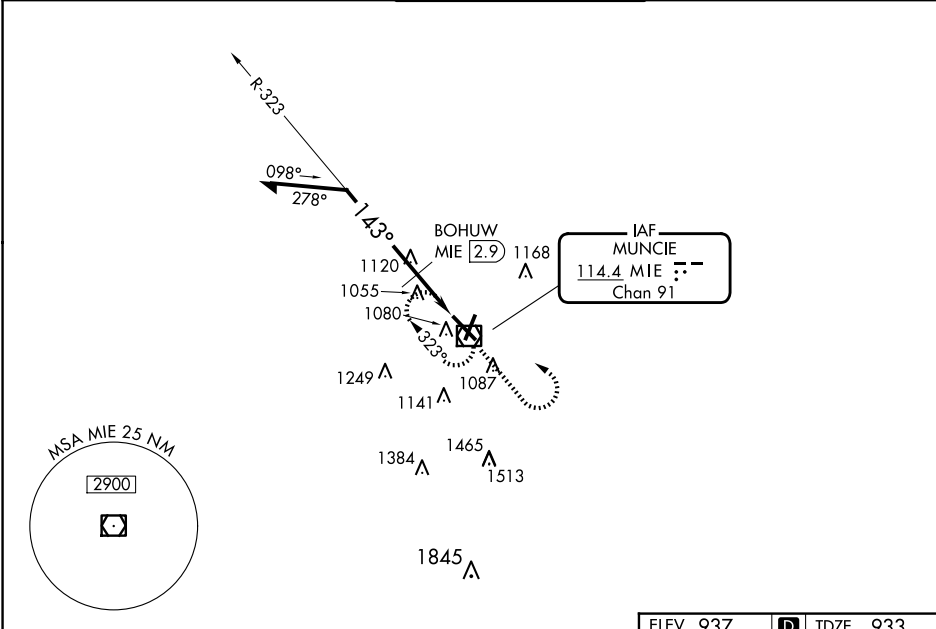
VOR/DME MIE	APP CRS	Rwy Ldg
114.4	143°	6500
Chan 91		TDZE 933
		Apt Elev 937

VOR RWY 14
DELAWARE COUNTY RGNL (MIE)

⚠ When local altimeter setting not received, use Fort Wayne Intl altimeter setting and increase all MDAs 140 feet; increase S-14 Cat C visibility ½ SM, Cat D ¼ SM; increase Circling Cat C/D visibility ½ SM. BOHUW fix minimums: increase S-14 Cat C visibility ½ SM, Cat D ¼ SM and Circling Cat C/D visibility ½ SM. VDP NA with Fort Wayne altimeter setting.

MISSED APPROACH: Climb to 2600 then left turn direct MIE VOR/DME and hold.

ATIS 133.25	INDIANAPOLIS APP CON 120.65 317.8	MUNCIE TOWER ★ 120.1 (CTAF) 0	GND CON 121.9	UNICOM 122.95
----------------	--------------------------------------	----------------------------------	------------------	------------------



Remain within 10 NM

2500

BOHUW MIE (2.9)

MIE VOR/DME 2600

323°

143°

*1480

0.8 1.3 0.8

2600

MIE

*1620 when using Fort Wayne Intl altimeter setting.

CATEGORY	A	B	C	D
S-14	1480-1 547 (600-1)		1480-1½ 547 (600-1½)	1480-1¾ 547 (600-1¾)
CIRCLING	1480-1 543 (600-1)		1480-1½ 543 (600-1½)	1560-2 623 (700-2)
BOHUW FIX MINIMUMS				
S-14	1380-1 447 (500-1)		1380-1¼ 447 (500-1¼)	1380-1½ 447 (500-1½)
CIRCLING	1460-1 523 (600-1)		1480-1½ 543 (600-1½)	1560-2 623 (700-2)

ELEV 937 D TDZE 933

143°

5198 X 100

6500 X 130

TWR

12

3

15

35

HIRL Rwy 14-32 0

MIRL Rwy 3-21 0

REIL Rwys 3, 14 and 21 0

EC-2, 10 JUL 2025 to 07 AUG 2025

EC-2, 10 JUL 2025 to 07 AUG 2025