

WAAS CH 78237 W03A	APP CRS 025°	Rwy Ldg TDZE 937 Apt Elev 937
--	------------------------	---

RNAV (GPS) RWY 3
DELAWARE COUNTY RGNL (MIE)

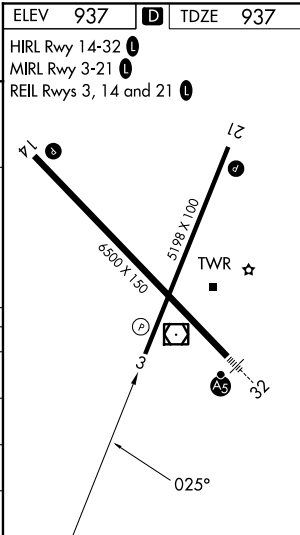
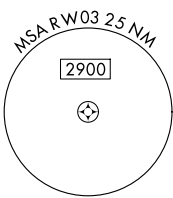
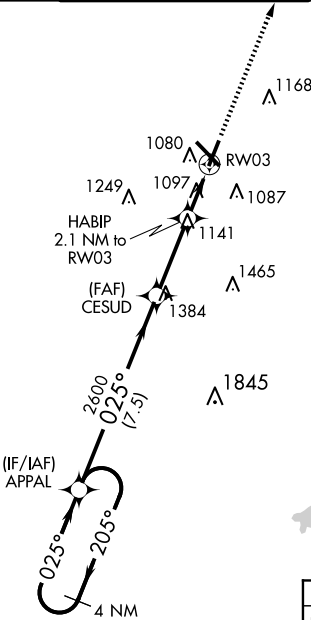
⚠ For uncompensated Baro-VNAV systems, LNAV/VNAV NA below -20°C (-4°F) or above 54°C (130°F). DME/DME RNP-0.3 NA. When local altimeter setting not received, use Fort Wayne Intl altimeter setting and increase all DA 121 feet and all MDA 140 feet; increase LPV all Cats and LNAV Cats C/D visibility ¾ mile, LNAV/VNAV all Cats visibility ¾ mile and Circling Cats C/D visibility ½ mile. Baro-VNAV NA when using Fort Wayne Intl altimeter setting. Helicopter visibility reduction below ¾ SM NA.

MISSED APPROACH:
Climb to 2800 direct
IFECA and hold.

ATIS 133.25	INDIANAPOLIS APP CON 120.65 317.8	MUNCIE TOWER ★ 120.1 (CTAF) 0	GND CON 121.9	UNICOM 122.95
-----------------------	---	---	-------------------------	-------------------------

RADAR REQUIRED

MISSED APCH FIX



4 NM Holding Pattern				2800	IFECA
APPAL				2600	
2800 ← 205°				CESUD	HABIP 2.1 NM to RW03
205° →					
GP 3.00° TCH 39					
2600				*1.2 NM to RW03	*LNAV only.
7.5 NM				3 NM	0.9 NM 1.2 NM
RW03					
CATEGORY	A	B	C	D	
LPV DA	1190-7⁄8		253 (300-7⁄8)		
LNAV/VNAV DA	1412-15⁄8		475 (500-15⁄8)		
LNAV MDA	1360-1	423 (500-1)	1360-11⁄4	423 (500-11⁄4)	
CIRCLING	1460-1	523 (600-1)	1500-11⁄2 563 (600-11⁄2)	1600-2 663 (700-2)	