

LOC I-JNK 109.1	APP CRS 319°	Rwy Ldg 6500 TDZE 937 Apt Elev 937
---------------------------	------------------------	---

ILS or LOC RWY 32
DELAWARE COUNTY RGNL (MIE)

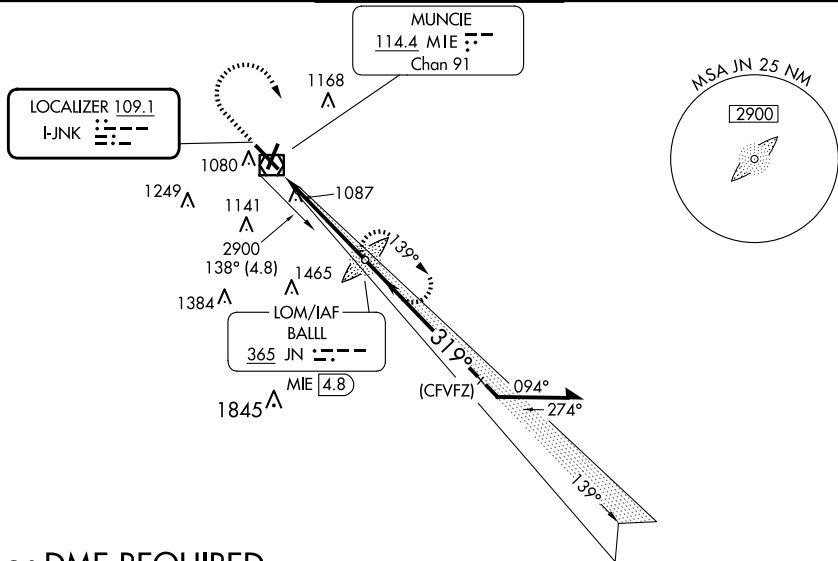
▼ When control tower closed, except for operations with approved weather reporting use Fort Wayne altimeter setting. For info MALSR when using Fort Wayne altimeter setting minimums, increase 5-ILS 32 visibility to 1 SM. When local altimeter setting not received, use Fort Wayne altimeter setting: increase DA to 1257 feet and visibility all Cats ½ SM; increase all MDAs 120 feet and visibility Cat C ¾ SM, Cat D 1 ½ SM. VDP NA when using Fort Wayne altimeter setting.

MALSR



MISSED APPROACH: Climb to 1460 then climbing right turn to 2900 direct BALL LOM and hold.

ATIS 133.25	INDIANAPOLIS APP CON 120.65 317.8	MUNCIE TOWER ★ 120.1 (CTAF) 0	GND CON 121.9	UNICOM 122.95
-----------------------	---	---	-------------------------	-------------------------



ADF or DME REQUIRED

ELEV 937

D

TDZE 937

41

21

6500 X 150

5198 X 100

TWR

☆

3

21

AS

319°

HIRL Rwy 14-32

MIRL Rwy 3-21

REIL Rwys 3, 14 and 21

FAF to MAP 4.6 NM

Knots	60	90	120	150	180
Min:Sec	4:36	3:04	2:18	1:50	1:32

1460

2900

JN

*LOC only.

*MIE

1.4

JN LOM

MIE 4.8

2462

139°

319°

2900

2500

GS 3.00°

TCH 52

1.2

3.4 NM

CATEGORY	A	B	C	D
S-ILS 32	1137- ¹ / ₂ 200 (200- ¹ / ₂)			
S-LOC 32	1380- ¹ / ₂	443 (500- ¹ / ₂)	1380- ⁷ / ₈	443 (500- ⁷ / ₈)
<div>C</div> CIRCLING	1460-1	523 (600-1)	1500-1 ¹ / ₂ 563 (600- ¹ / ₂)	1600-2 663 (700-2)

FORT WAYNE ALTIMETER SETTING MINIMUMS

S-ILS 32	1257- ⁵ / ₈ 320 (400- ⁵ / ₈)			
S-LOC 32	1520- ¹ / ₂	583 (600- ¹ / ₂)	1520-1 ¹ / ₂ 583 (600-1 ¹ / ₂)	1520-2 ¹ / ₂ 583 (600-2 ¹ / ₂)
<div>C</div> CIRCLING	1580-1	643 (700-1)	1600-1 ³ / ₄ 663 (700-1 ³ / ₄)	1720-2 ¹ / ₂ 783 (800-2 ¹ / ₂)