

RNAV (GPS) RWY 36

APCH CRS 357°	Rwy Idg 12,351 TDZE 911 Arpt Elev 911
------------------	---

- (USAF)

GRAND FORKS AFB (KRDR)

RNP APCH-GPS	
--------------	--

ALSF-1

MISSED APPROACH: Climb to 1 500 then climbing left turn to 3000 direct FRISK and hold.

* When ALS inop, increase CAT AB RVR to 55, vis to 1 mile; CAT CDE vis to 1 1/2 miles.

** Circling E of Rwy 18-36 not authorized.

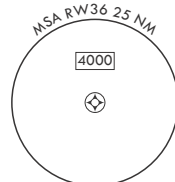
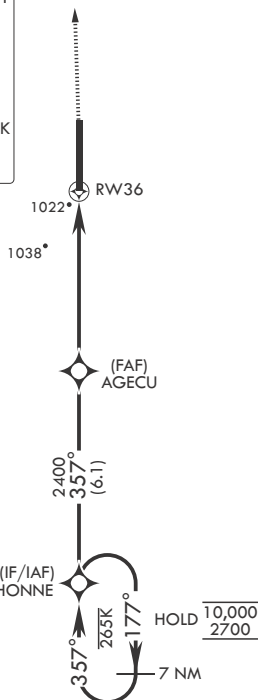
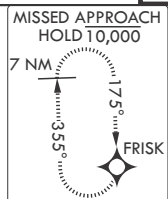
ATIS
273.45

APP CON★
118.1 318.1

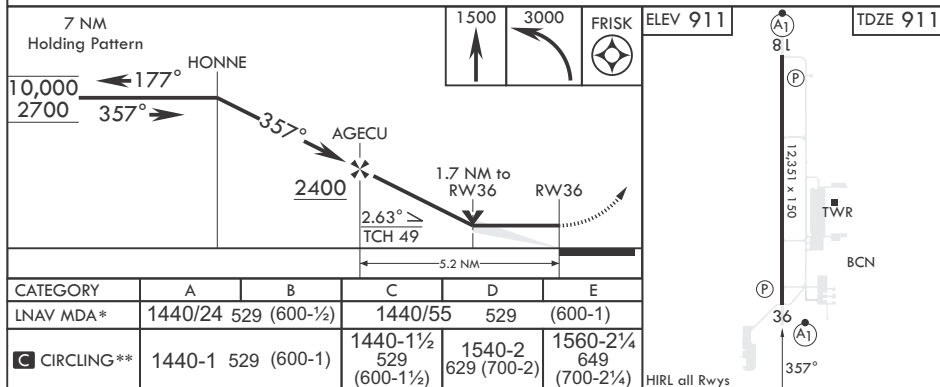
RED RIVER TOWER★
124.9 349.0

GND CON
119.15 275.8

CLNC DEL
119.15 360.7



EMERG SAFE ALT 100 NM 4100



GRAND FORKS, NORTH DAKOTA

47°58'N - 97°24'W

GRAND FORKS AFB (KRDR)

RNAV (GPS) RWY 36

Orig 10AUG23

NC-1, 10 JUL 2025 to 07 AUG 2025

NC-1, 10 JUL 2025 to 07 AUG 2025