

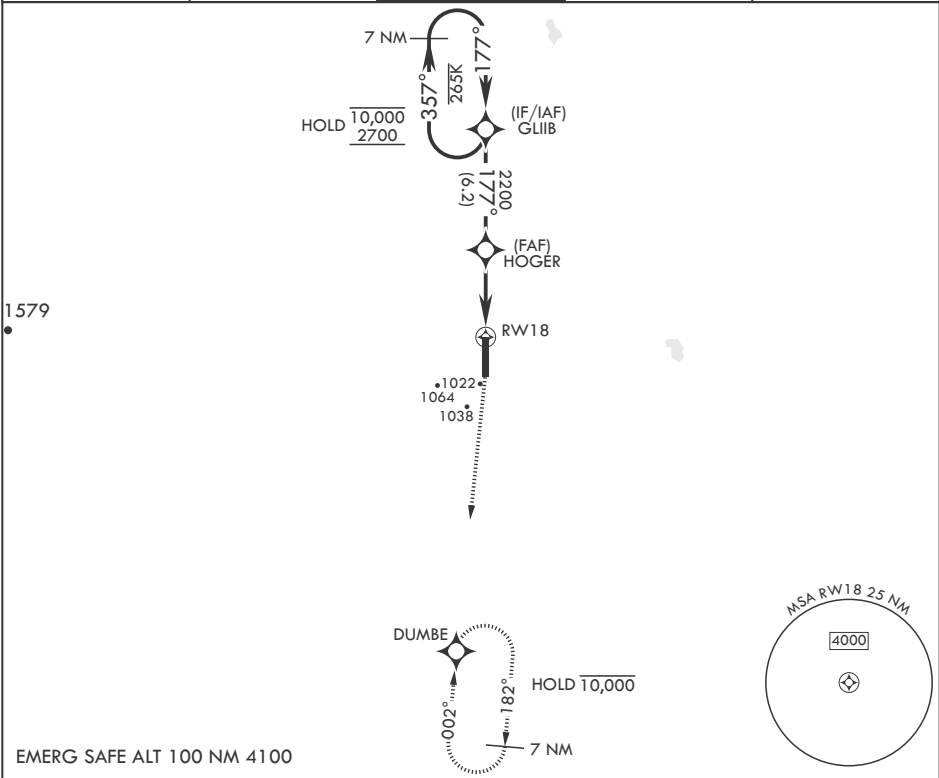
APCH CRS	Rwy Idg	12,351
177°	TDZE	900
	Arprt Elev	911

- (USAF)

GRAND FORKS AFB (KRDR)

RNP APCH-GPS	ALSF-1	MISSED APPROACH: Climb to 1500 then climbing right turn to 3000 direct DUMBE and hold.
* When ALS inop, increase CAT AB RVR to 55, vis to 1 mile; CAT CDE vis to 1 1/4 miles.		
** Circling E of Rwy 18-36 not authorized.		

ATIS 273.45	APP CON★ 118.1 318.1	RED RIVER TOWER★ 124.9 349.0	GND CON 119.15 275.8	CLNC DEL 119.15 360.7
----------------	-------------------------	---------------------------------	-------------------------	--------------------------



7 NM Holding Pattern	1500	3000	DUMBE	ELEV 911	177°	TDZE 900
10,000 2700	GLIB	HOGER	2200	1.4 NM to RW18	RW18	
			2.63° ≥ TCH 49	4.5 NM		
CATEGORY	A	B	C	D	E	
LNAV MDA*	1340/24	440 (500-½)	1340/40	440	(500-¾)	
CIRCLING**	1340-1 429 (500-1)	1380-1 469 (500-1)	1380-1½ 469 (500-1½)	1540-2 629 (700-2)	1560-2¼ 649 (700-2¼)	

NC-1, 10 JUL 2025 to 07 AUG 2025

NC-1, 10 JUL 2025 to 07 AUG 2025