

ILS or LOC RWY 36

GRAND FORKS AFB (KRDR)

LOC I-RDR 109.9	APCH CRS 357°	Rwy Idg 12,351 TDZE 911 Arpt Elev 911
---------------------------	-------------------------	--

[USAF]

RADAR or DME required



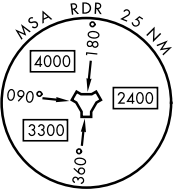
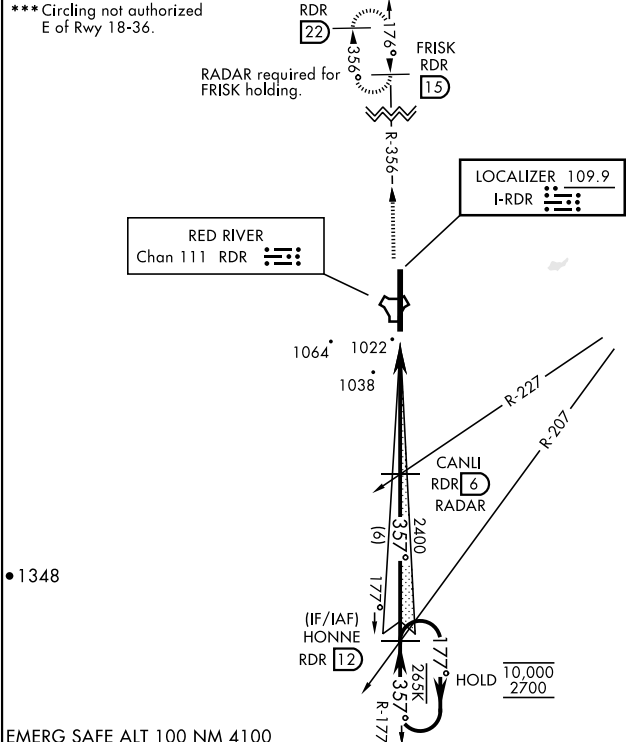
MISSED APPROACH: Climb to 3000 on RDR TACAN R-356 to FRISK and hold.

- * When ALS inop, increase RVR to 40 and vis to ¾ mile.
- ** When ALS inop, increase CAT AB RVR to 55 and vis to 1 mile, CAT CDE vis to 1½ miles.

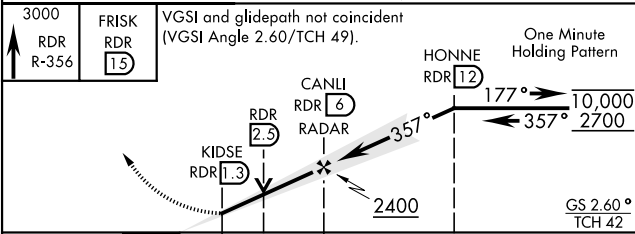
ATIS 273.45	APP CON ★ 118.1 318.1	RED RIVER TOWER ★ 124.9 349.0	GND CON 119.15 275.8	CLNC DEL 119.15 360.7
-----------------------	---------------------------------	---	--------------------------------	---------------------------------

*** Circling not authorized E of Rwy 18-36.

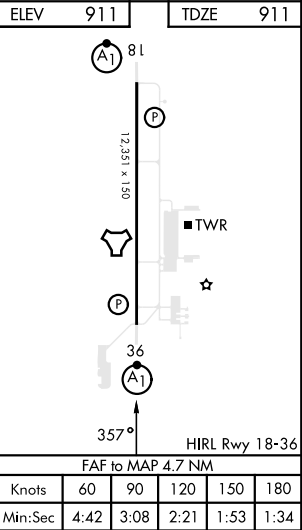
CAUTION: Low TCH 42



EMERG SAFE ALT 100 NM 4100



CATEGORY	A	B	C	D	E
S-ILS 36 *	1111/24		200	(200-½)	
S-LOC 36 **	1440/24	529 (600-½)	1440/55	529	(600-1)
CIRCLING ***	1440-1	529 (600-1)	1440-1½ 529 (600-½)	1540-2 629 (700-2)	1560-2½ 649 (700-2½)



ILS or LOC RWY 36

NC-1, 10 JUL 2025 to 07 AUG 2025

NC-1, 10 JUL 2025 to 07 AUG 2025