

WAAS CH <b>82702</b> <b>W28A</b>	APP CRS <b>276°</b>	Rwy Idg TDZE Apt Elev	<b>4199</b> <b>673</b> <b>673</b>
--	------------------------	-----------------------------	---

# RNAV (GPS) RWY 28

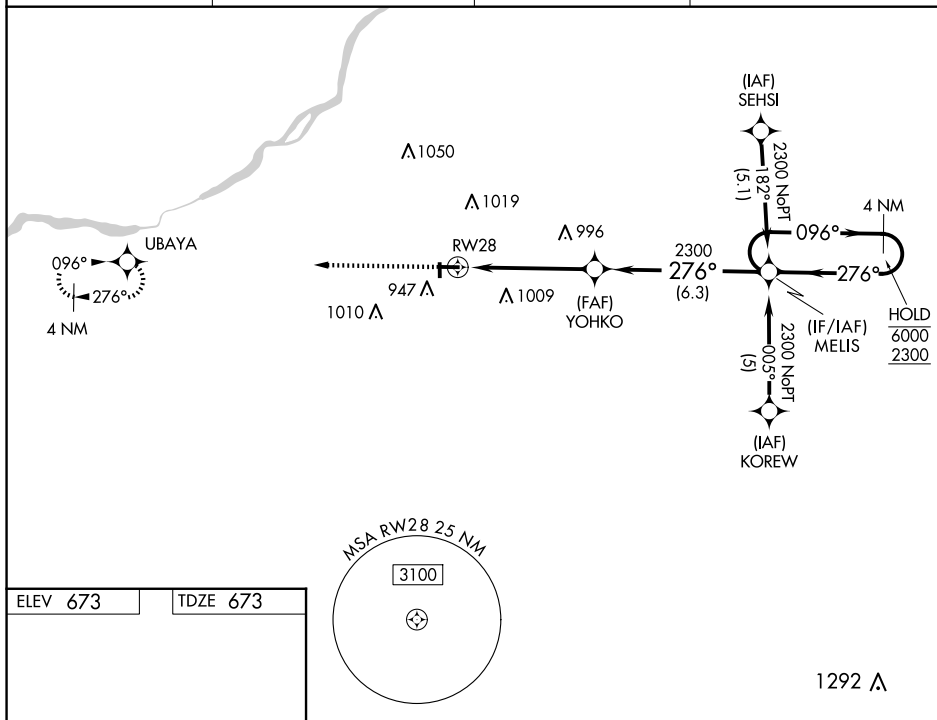
RNP APCH.

**T** Circling Rwy 36 NA at night. Rwy 28 helicopter visibility reduction below  $\frac{3}{4}$  SM NA. VDP NA when using Toledo Express altimeter setting.

**A** NA When local altimeter setting not received, use Toledo Express altimeter setting: increase DA to 958 feet; increase all MDA 40 feet and LNAV Cat C visibility  $\frac{1}{8}$  SM, Circling Cats C/D visibility  $\frac{1}{4}$  SM.

MISSED APPROACH: Climb to 2300  
direct UBAYA and hold.

AWOS-3 <b>120.725</b>	TOLEDO APP CON <b>126.1 317.55</b>	CLNC DEL <b>125.6</b>	UNICOM <b>122.975 (CTAF) ①</b>
--------------------------	---------------------------------------	--------------------------	-----------------------------------



**REL Rwy**s 10, 18 and 28  
**MIRL Rwy**s 10-28 and 18-36

CATEGORY	A	B	C	D
LPV DA	<b>923-1 250 (300-1)</b>			
LNAV MDA	1200-1	527 (600-1)	1200-1½ 527 (600-1½)	1200-1¾ 527 (600-1¾)
CIRCLING	1300-1	627 (700-1)	1320-1¾ 647 (700-1¾)	1320-2 647 (700-2)