

VOR/DME COY

108.2

Chan 19

APP CRS

259°

Rwy ldg

9002

TDZE

40

Apt Elev

74

VOR RWY 28

HENRY E ROHLSSEN (STX)(TISX)

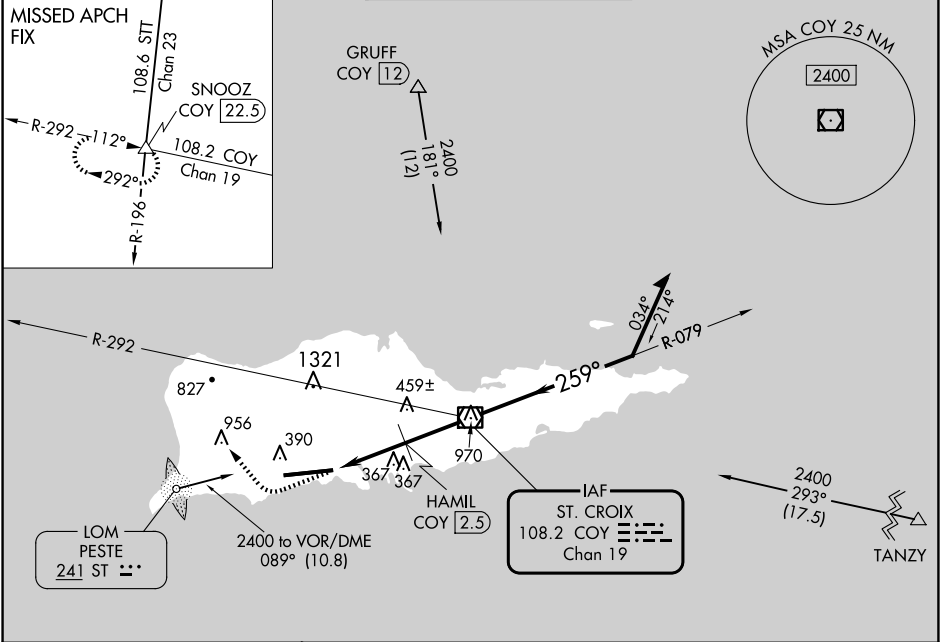
▼

⚠

Helicopter visibility reduction below 1 SM NA. Rwy 28 Straight-in and Circling minimums NA at night. When local altimeter setting not received, procedure NA. Circling NA north of Rwy 10-28.

MISSED APPROACH: Climb to 2000 then climbing right turn to 2400 via heading 330° and COY R-292 to SNOOZ Int/COY 22.5 DME and hold.

ATIS	SAN JUAN CENTER	ST. CROIX TOWER ★	GND CON	UNICOM
135.65	128.65 279.6	118.6 (CTAF) 239.3	121.7	123.0



ELEV 74

TDZE 40

2000

2400

COY

SNOOZ

↑

hdg 330°

R-292

△

VGSI and descent angles not coincident (VGSI Angle 3.00/TCH 80).

COY VOR/DME

Remain within 10 NM

079°

2400

259°

1900

960

3.23°

TCH 52

HAMIL COY 2.5

COY 5

0.3

2.5 NM

2.5 NM

CATEGORY	A	B	C	D
S-28	960-1¼	920 (900-1¼)	960-2¾ 920 (900-2¾)	960-3 920 (900-3)
CIRCLING	960-1¼	886 (900-1¼)	960-2¾ 886 (900-2¾)	960-3 886 (900-3)

HAMIL FIX MINIMUMS

S-28	640-1	600 (600-1)	640-1½ 600 (600-1½)	640-1¾ 600 (600-1¾)
CIRCLING	640-1	566 (600-1)	720-1¾ 646 (700-1¾)	720-2 646 (700-2)

REIL Rwy 28

HIRL Rwy 10-28

FAF to MAP 5 NM

Knots

60

90

120

150

180

Min:Sec

5:00

3:20

2:30

2:00

1:40

1000X 150

253

0.4% UP

0.6% DOWN

TWR 141±

259°

28