

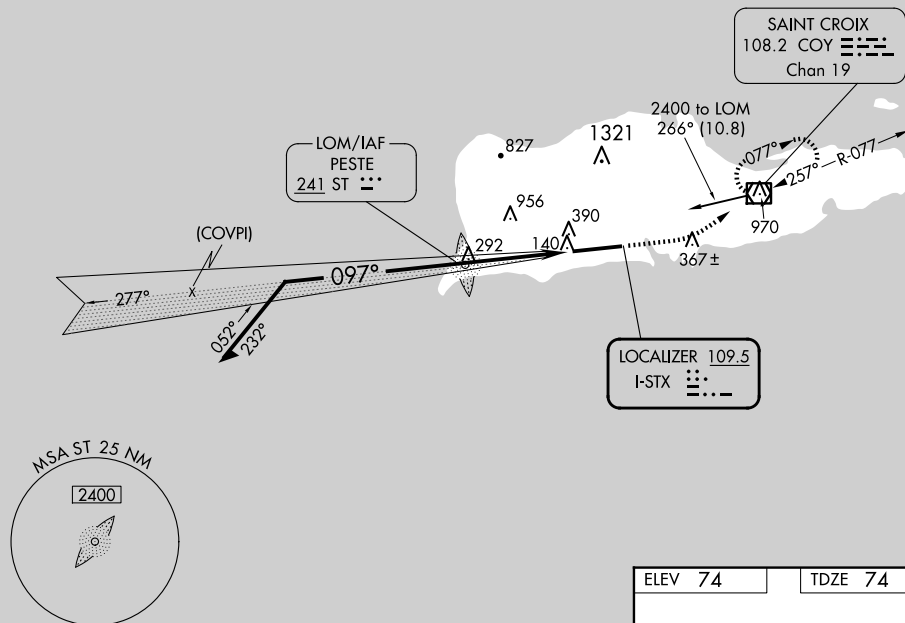
ILS or LOC RWY 10
HENRY E ROHLSEN (STX)(TISX)

MALSR

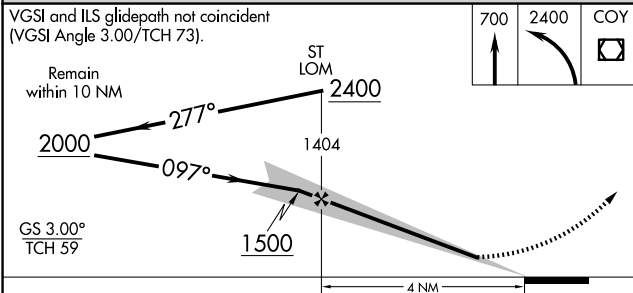
MISSED APPROACH: Climb to 700 then climbing left turn to 2400 direct COY VOR/DME and hold, continue climb-in-hold to 2400.

ATIS 135.65	SAN JUAN CENTER 128.65 279.6	ST. CROIX TOWER ★ 118.6 (CTAF) 0 239.3	GND CON 121.7	UNICOM 123.0
----------------	---------------------------------	---	------------------	-----------------

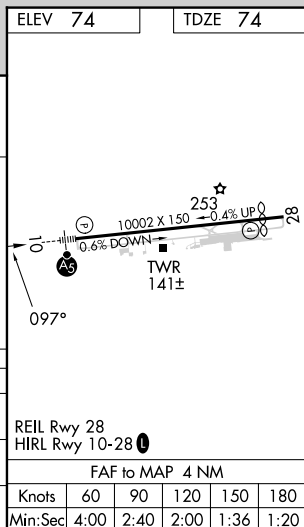
ADF REQUIRED



VGSI and ILS glidepath not coincident (VGSI Angle 3.00/TCH 73).



CATEGORY	A	B	C	D
S-ILS 10	375- $\frac{1}{2}$ 301 (400- $\frac{1}{2}$)			
S-LOC 10	480- $\frac{1}{2}$ 406 (500- $\frac{1}{2}$)	480- $\frac{3}{4}$ 406 (500- $\frac{3}{4}$)		
CIRCLING	520-1 446 (500-1)	600-1 526 (600-1)	720- $\frac{1}{4}$ 646 (700- $\frac{1}{4}$)	720-2 646 (700-2)



ILS or LOC RWY 10