

VOR FKL	APP CRS	Rwy ldg	5200
109.6	187°	TDZE	1540
		Apt Elev	1540

VOR RWY 21

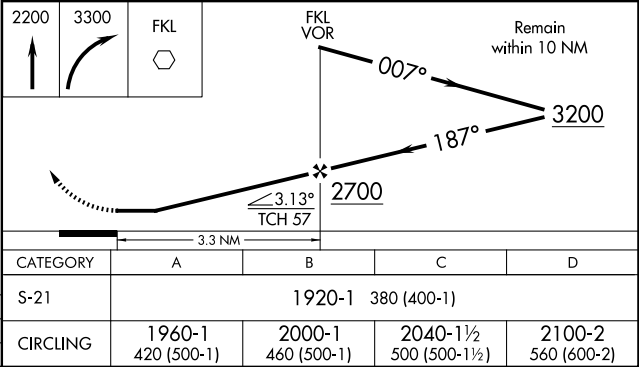
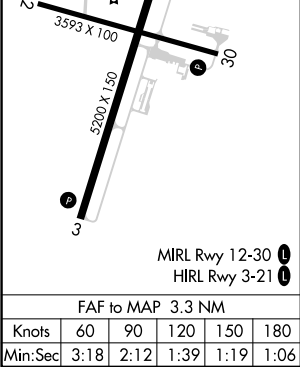
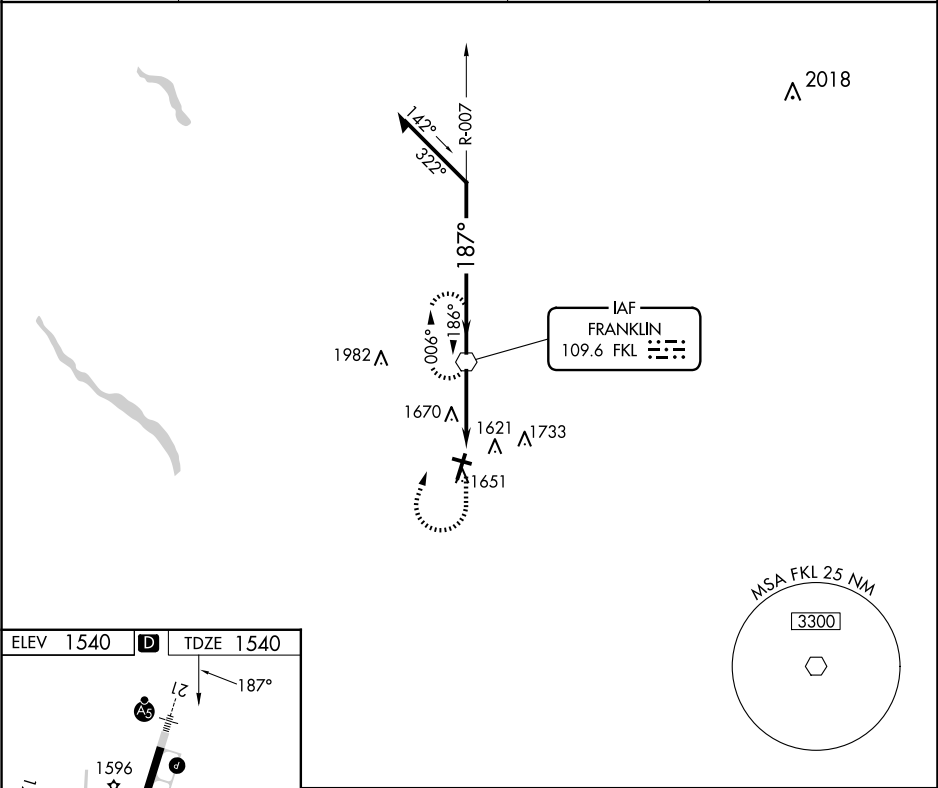
VENANGO RGNL (F'KL)

Inop table does not apply. When local altimeter setting not received, use Port Meadville altimeter setting and increase all MDA 80 feet and S-21 Cats C/D visibility ⅜ mile. Circling Rwy 12 NA at night. Rwy 12 helicopter visibility reduction below 1 SM NA.

MALSRL

MISSED APPROACH: Climb to 2200, then climbing right turn to 3300 direct FKL VOR and hold.

AWOS-3PT 118.175	YOUNGSTOWN APP CON ★ 126.25 322.3	CLNC DEL 126.25	UNICOM 122.7 (CTAF) 0
---------------------	--------------------------------------	--------------------	--------------------------



NE-4, 10 JUL 2025 to 07 AUG 2025

NE-4, 10 JUL 2025 to 07 AUG 2025